

# UVC1000/UVC1010



## Vacuum Generator/Pressure Controller



UVC1000

**Please refer to price pages for part numbers and part numbering guide.**

Rugged, versatile, portable...the UVC1000 vacuum generator/pressure controller packs a lot of performance into one affordable instrument.

Complete mechanical operation allows operators to utilize the UVC1000 in areas that are off limits to vacuum pumps. This efficient unit contains a built-in vacuum converter that works with existing shop air to power up to 29 inches of Hg vacuum. As a result, the UVC1000 eliminates fumes and vibrations that are dangerous in nuclear power plants, oil refineries, and other hazardous environments.

Regardless of the location, the UVC1000 is convenient for on-the-go operation. Its lightweight structure and compact design provide quick and convenient performance. This versatile unit can also be used to control and regulate positive pressure.

The UVC1000/UVC1010...the ideal source for vacuum and pressure control in an endless number of applications and locations.

### Applications

- Hazardous environments
- Source for calibration of compound gages
- Low-cost alternative to vacuum pump
- Need for precise vacuum or pressure control

### Standard Features

- Two modes of operation: vacuum or pressure
- 29" Hg vacuum from shop air supply
- Lightweight design
- Built-in vacuum converter and pressure regulator
- Available as standard (UVC1000) or rack mounted version (UVC1010)

**PRESSURE MEDIA:**

Filtered shop air

**PRESSURE INPUT:**

100-150 psi\*, 4.2 SCFM, AN-437° flared tube setting

**PRESSURE LIMIT MONITOR GAGE:**

Size: 2" diameter

Range: 0-160 psi

**VACUUM MONITOR GAGE:**

Size: 2" diameter

Range: 0-30" Hg

**REGULATOR:**

Aluminum/brass 0-100 psi output pressure

**UVC1000 CASE:**

Steel

**PRESSURE/VACUUM SELECTOR:**

Brass

**FITTINGS:**

Brass, quick disconnect, 1/4"

**INTERNAL TUBING:**

250 psi rated tubing

**WEIGHT:**

UVC1000: 6.6 lb (2.9 kg)

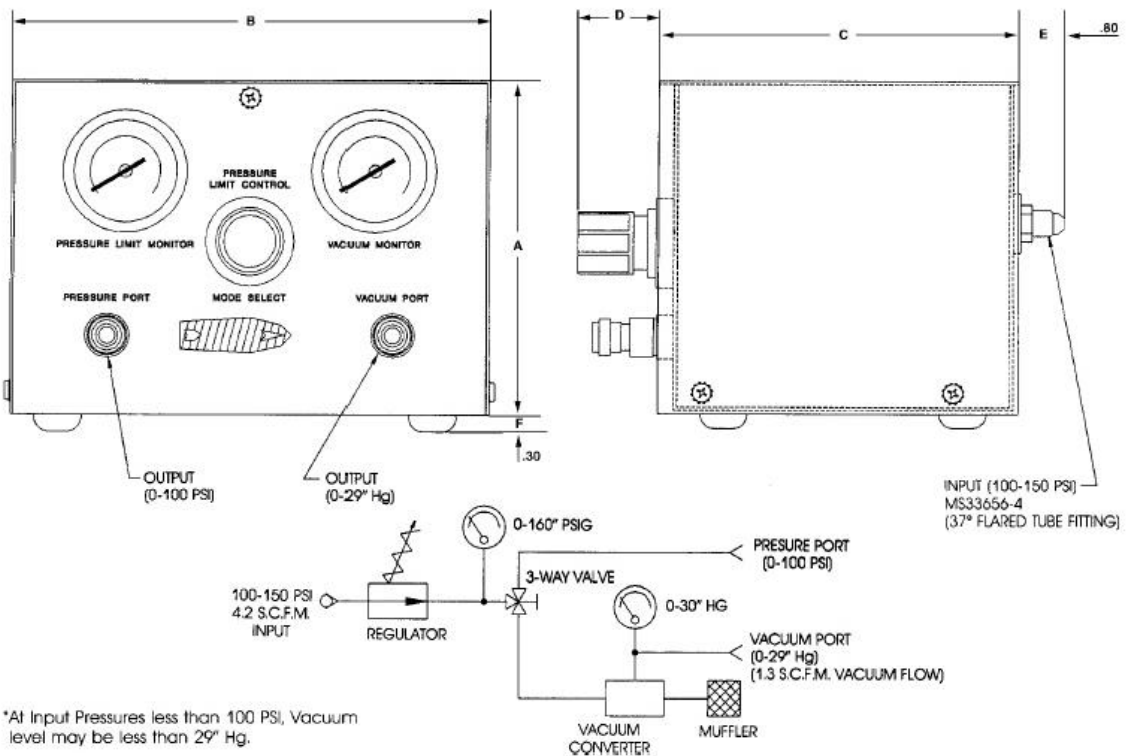
UVC1010: Approx. 7 lb (3 kg)

\*At input pressures less than 100 psi, vacuum level may be less than 29" Hg.

**UVC1000 DIMENSIONS**

A = 5.70" (144.78mm)	D = 1.30" (33.02mm)
B = 8.14" (206.75mm)	E = 0.80" (20.32mm)
C = 6.10" (154.94mm)	F = 0.30" (7.62mm)

Consult factory for UVC1010 dimensions.



\*At Input Pressures less than 100 PSI, Vacuum level may be less than 29" Hg.



Specifications subject to change without notice  
© Condec 2000 PN64756 4/00