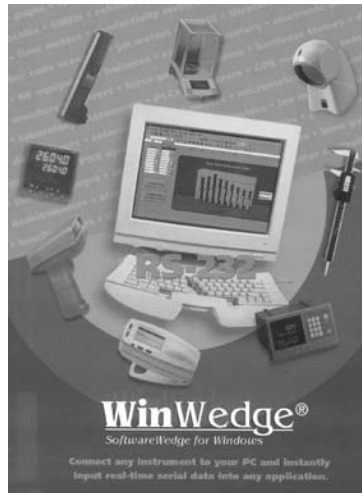


WinWedge® TAL Software

Bar Code Label Software



STANDARD FEATURES

- Input scale or instrument data directly into Excel™, Access™, statistical software, LIMS, MMIs, any Windows® application
- Transfers RS-232 data quickly, accurately and formatted to your exact specifications
- Powerful DDE options for collecting data from multiple devices simultaneously
- Extremely easy to set-up and use

32 PRO, TCP/WEDGE ADDITIONAL FEATURES:

- Support for even the most complex devices and serial I/O with advanced data parsing, filtering, formatting and translation
- Support for TCP/IP as well as RS-232 data collection and I/O
- More advanced device control options
- Additional features such as math functions and virtual instrument mode
- Five RS-232 and TCP/IP communications software products provided free of charge

SPECIFICATIONS

SYSTEM REQUIREMENTS:

Any version of Windows®
Any Windows PC
4 MB of RAM
2 MB of hard disk space

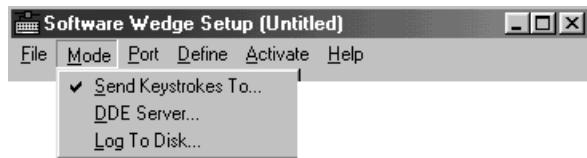
COMMUNICATIONS:

WinWedge can collect data on any serial port (RS-232 or RS-485) and even on multiple ports simultaneously. Also supports full device control.

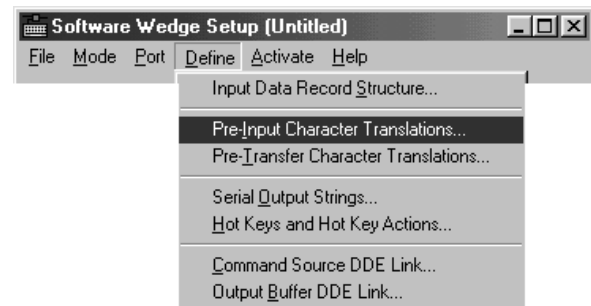
SOFTWARE SUPPORT:

Rice Lake Weighing Systems offers field software support for our software packages. Contact our Service Department for software support. Software support is a chargeable service.

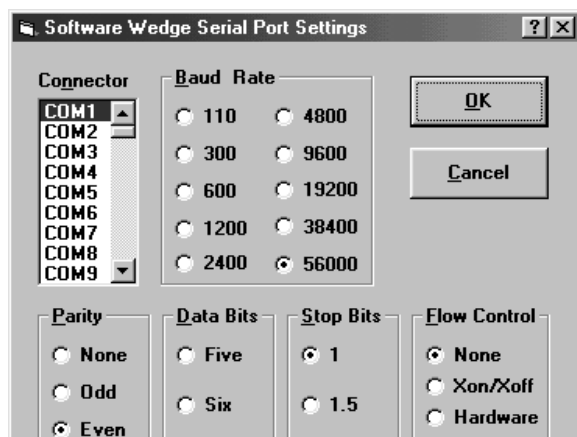
1. SELECT HOW YOU WANT THE DATA COLLECTED:



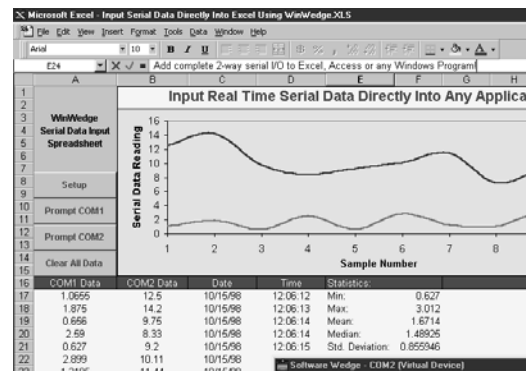
2. CHOOSE THE COMMUNICATION PARAMETERS FOR YOUR SERIAL DEVICE:



3. DEFINE HOW YOU WANT THE SERIAL DATA TO BE PARSED, FILTERED, AND TRANSLATED:



4. ACTIVATE WINWEDGE AND WATCH YOUR SERIAL DATA "POP" INTO YOUR APPLICATION:



Windows is a registered trademark of Microsoft Corporation