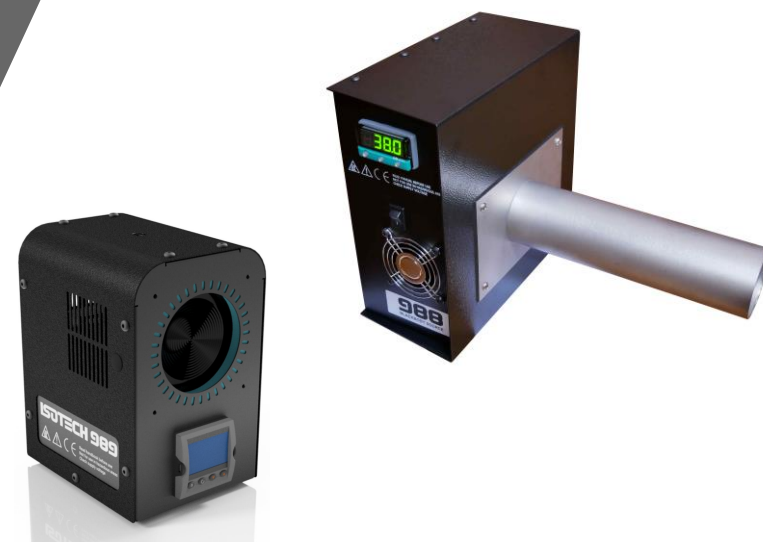


Human Body Temperature Blackbody Sources

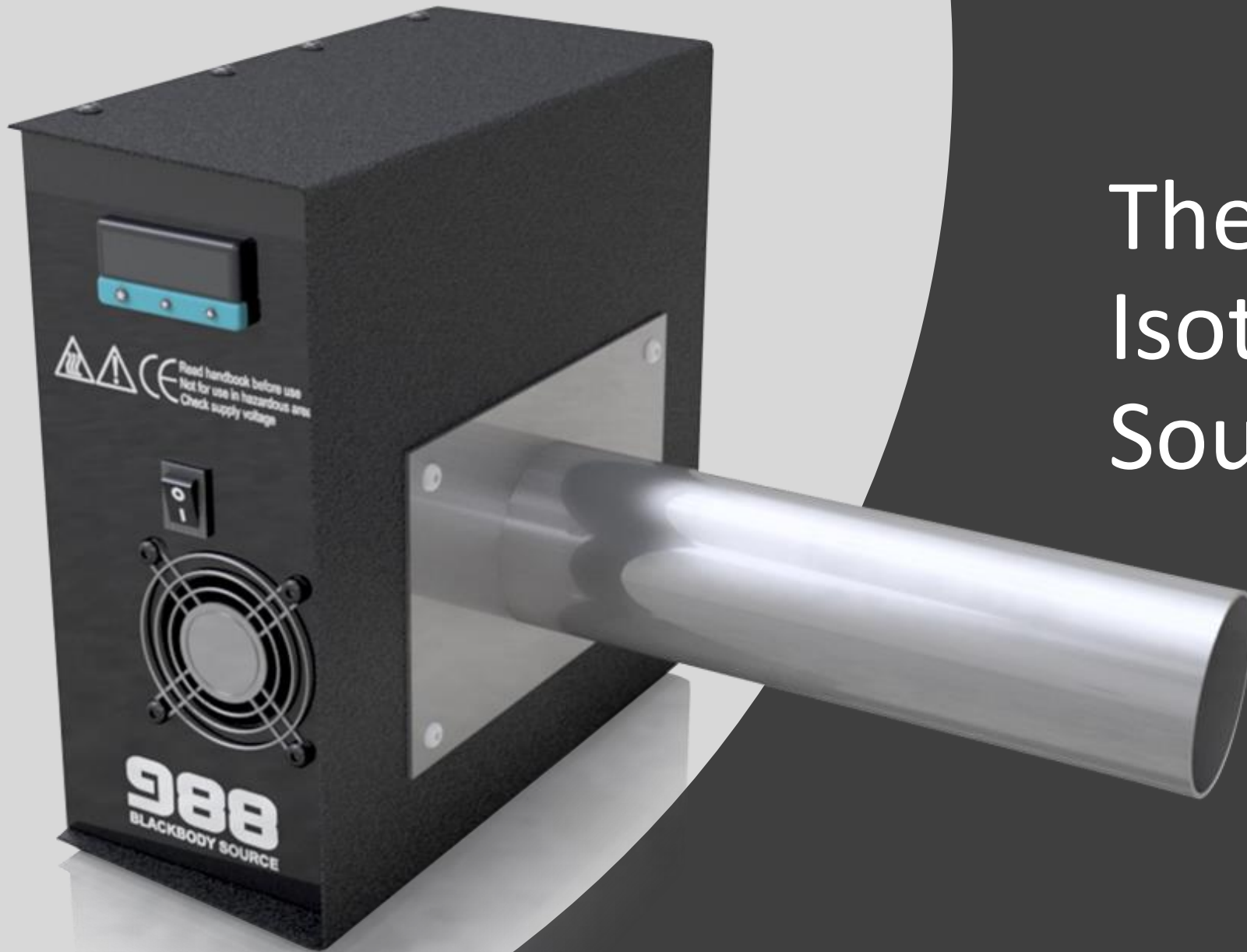


ISOTECH 40 years
1980-2020

LSOTECH

A world leader in temperature metrology
Celebrating 40 years in business 1980 - 2020
Holds Queen's Award for Enterprise in the
Innovation Category

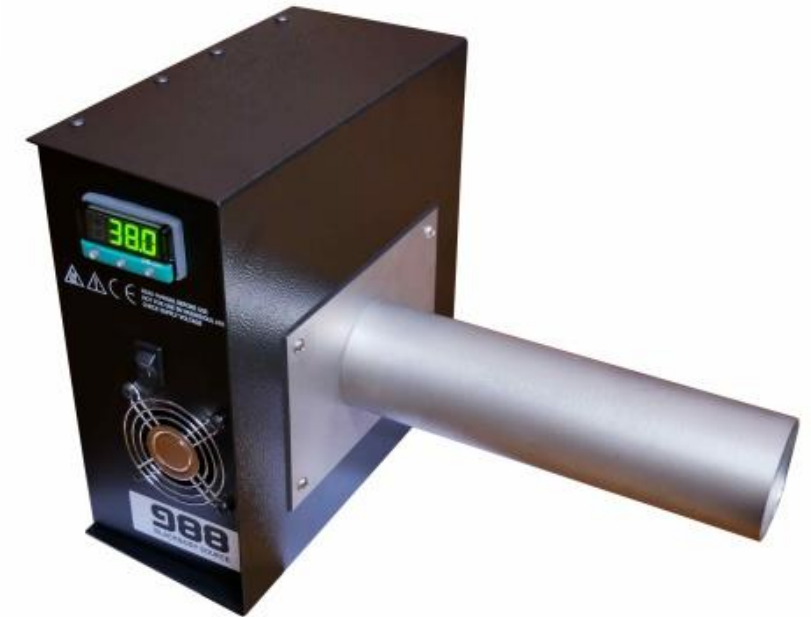




The original Isotech Blackbody Source 988

First introduced more than 15 years ago to assist in relation to the SARS outbreak

Blackbody calibrators are used to increase the accuracy of non-contact fever detection systems



Now it is being used in relation to Coronavirus

COVID-19 :Airport Fever Detection System



The model 988 can also be used to check non-contact medical thermometers

The S version has a 40mm tube with a guide to fix the position of the thermometer relative to the heat source

There are options to customise to suit different thermometer types

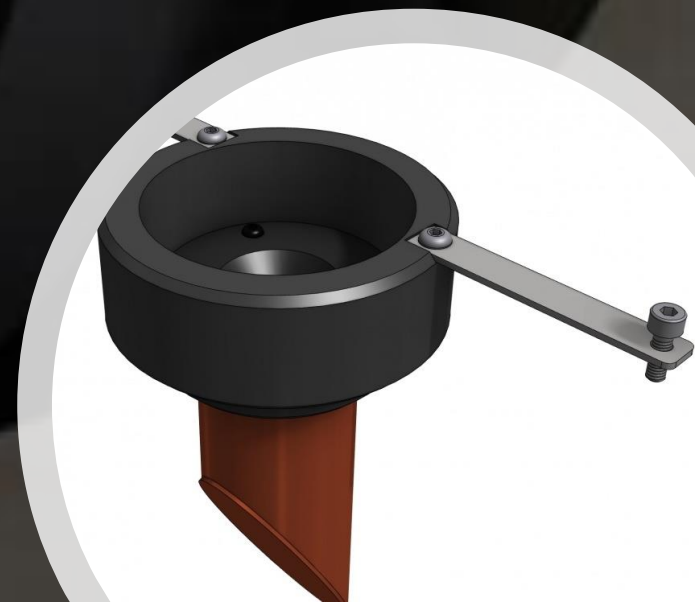


NEW

Now the Model 989 has been introduced which has **additional features**, a smaller case and **at a lower price**



Isotech also have larger blackbody sources for the laboratory



The 989 has both heating and active cooling to span the temperature range 20°C to 50°C

An internal solid-state thermoelectric heat pump allows the unit to operate below ambient temperature

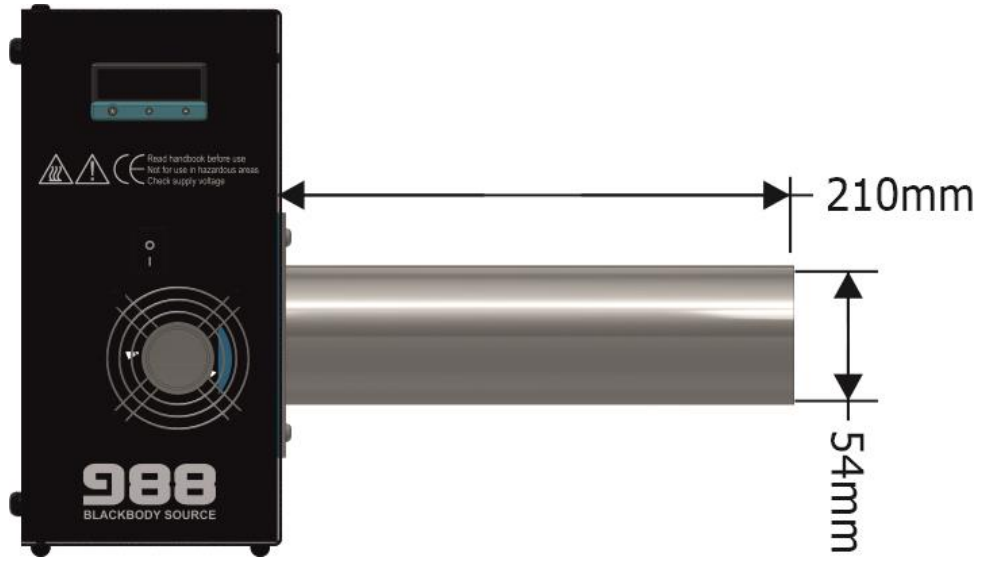
It allows the 989 to maintain body temperature in high ambient temperatures – a benefit compared to heat only blackbody sources



During development, evaluation of the original 988 showed that fitting the extension tube gives better uniformity and less sensitivity to air movement / draughts



The Model 989 can be used with or without an extension tube and adding the longer tube reproduces the original 988 configuration



988



989

The unit can be used vertically as well as horizontally



It is easy to mount featuring **two** easy mount points

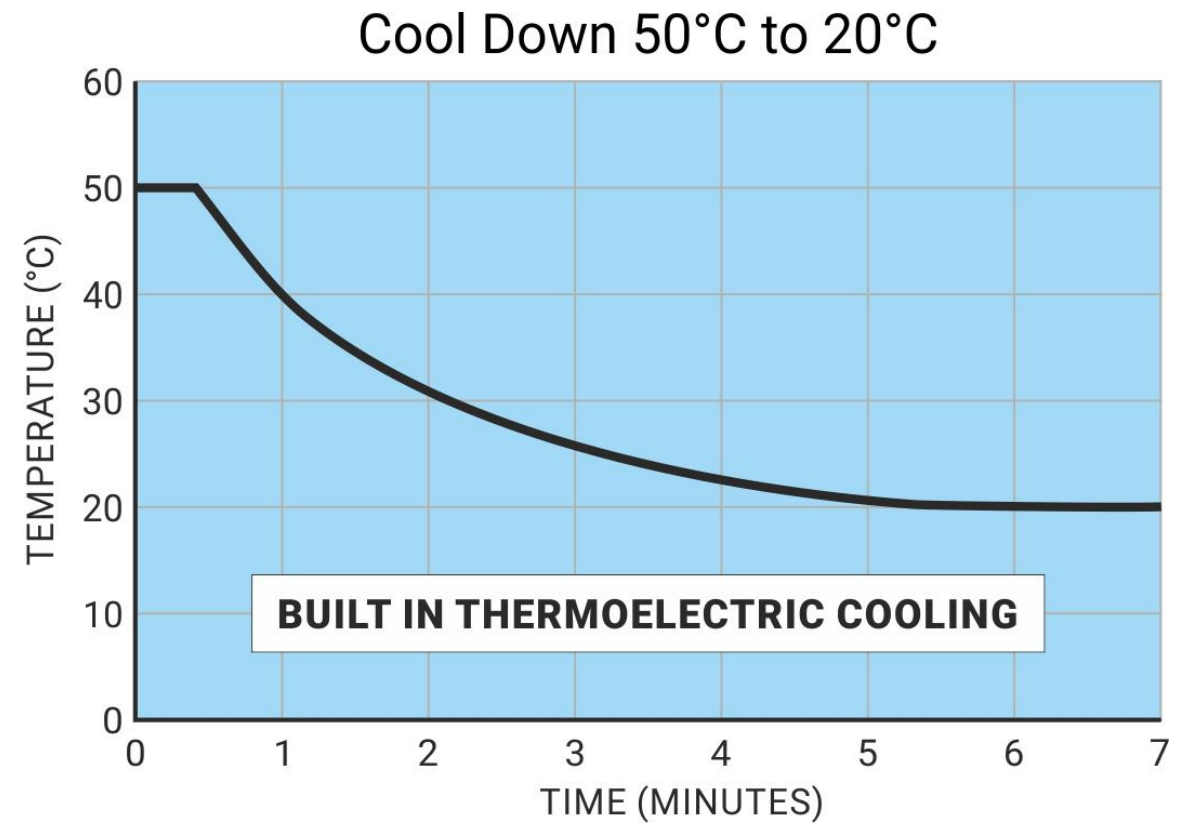
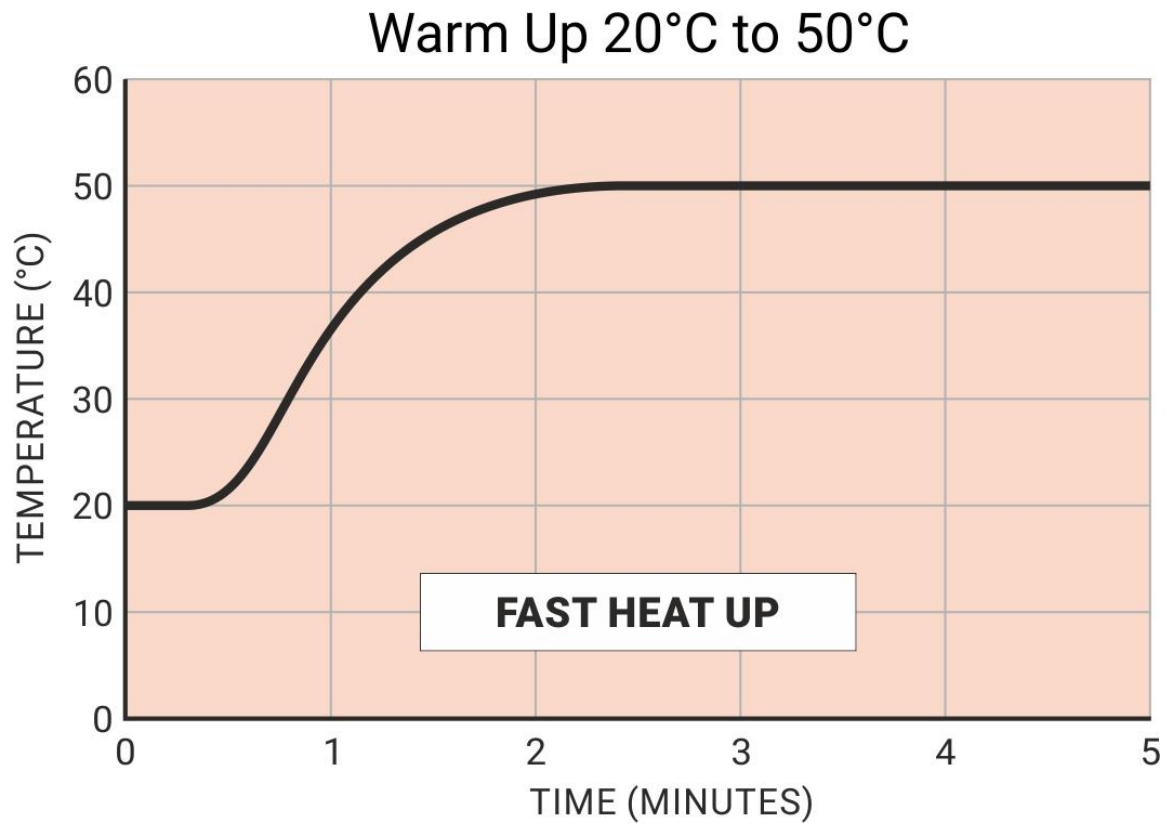
Works with standard tripods / camera fixings

1/4"-20 UNC Thread

Stand Not Included



Fast response to achieve the set temperature





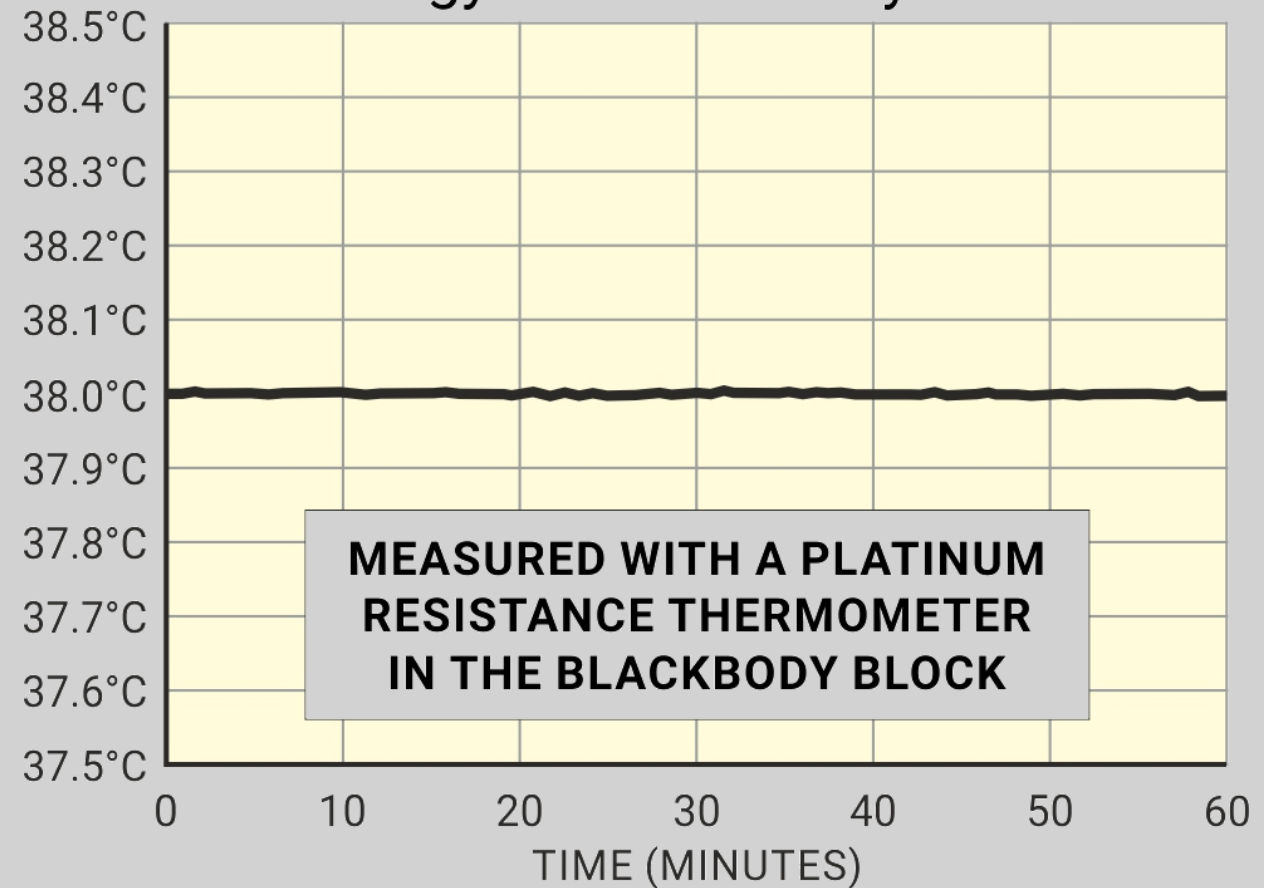
Tamper Proof Operation
To prevent inadvertent changes the
operating temperature can be
locked

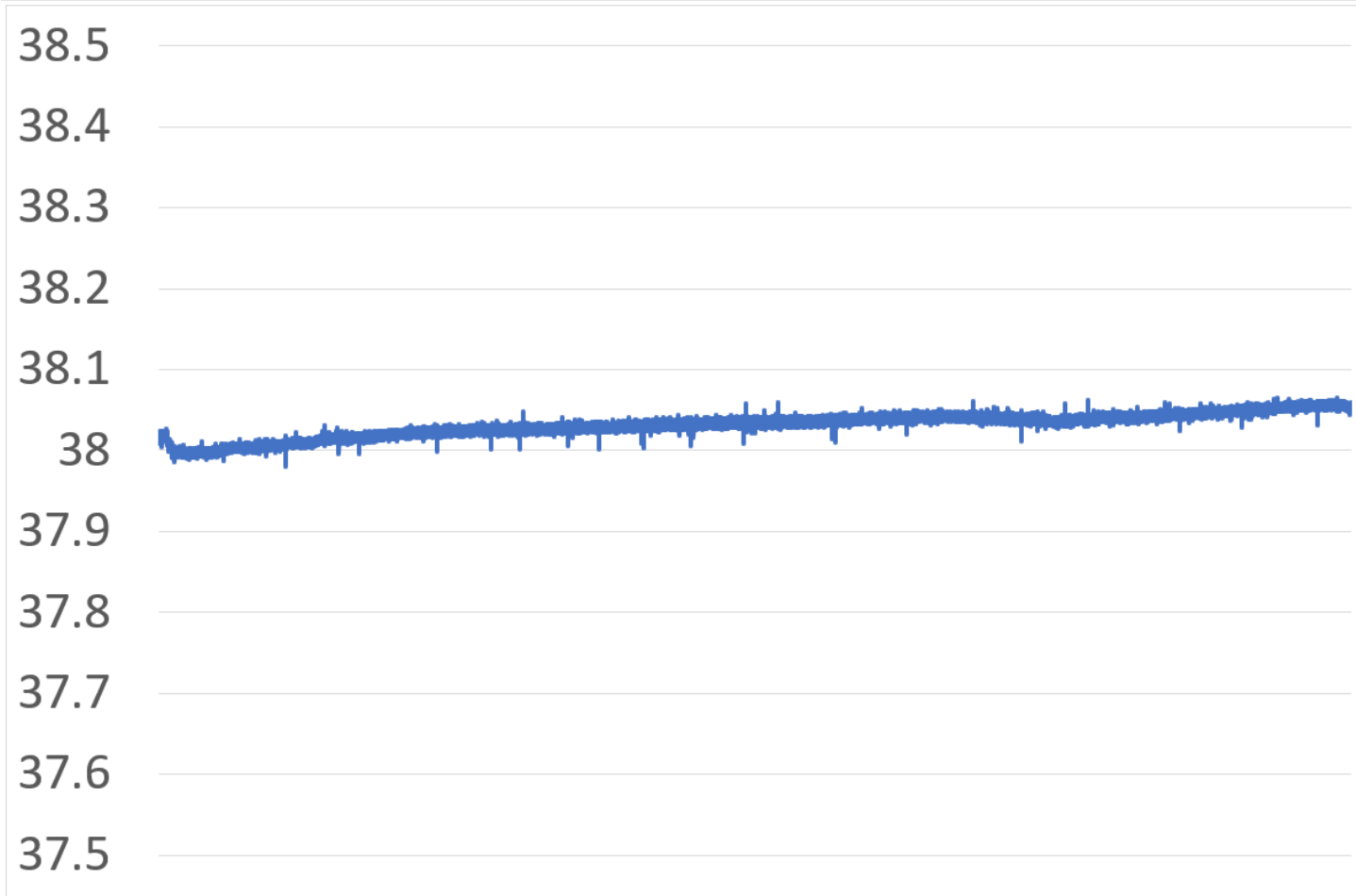


Features: Metrology Grade Stability

- Isotech expertise delivers outstanding temperature Stability
- Short Term Stability $<0.005\text{ }^{\circ}\text{C}$ @ $38\text{ }^{\circ}\text{C}$
- 48 Hour Stability $<0.05\text{ }^{\circ}\text{C}$
- (T_{amb} 20 to 23 $^{\circ}\text{C}$)

Metrology Grade Stability $<0.005\text{ }^{\circ}\text{C}$





48 Hour Stability <0.05 °C

Features: Metrology Grade Stability
(T_{amb} 20 to 23 °C)

Features

- High Resolution Three Colour LCD Display
- Set temperature can be adjusted in 0.01 steps (or locked)



Features

Switchable between °C, °F or K



Features

Auto Start Up
No manual
intervention needed

Self Test with diagnostics

Set Point Ramp Rate

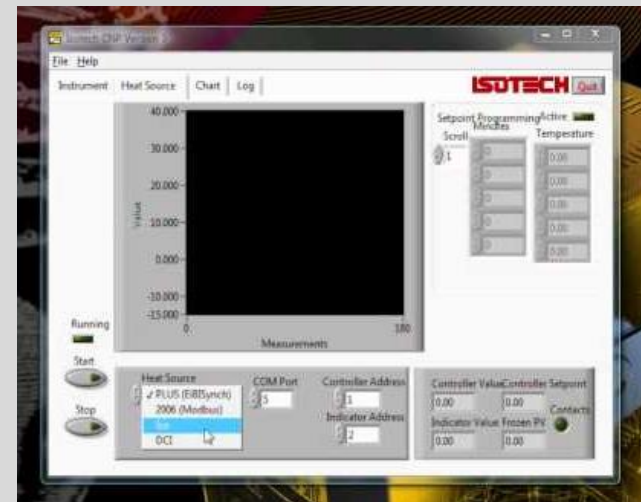
Safe Low Voltage Operation,
universal mains supply
included

Optional Calibration Kit

PC Interface Included

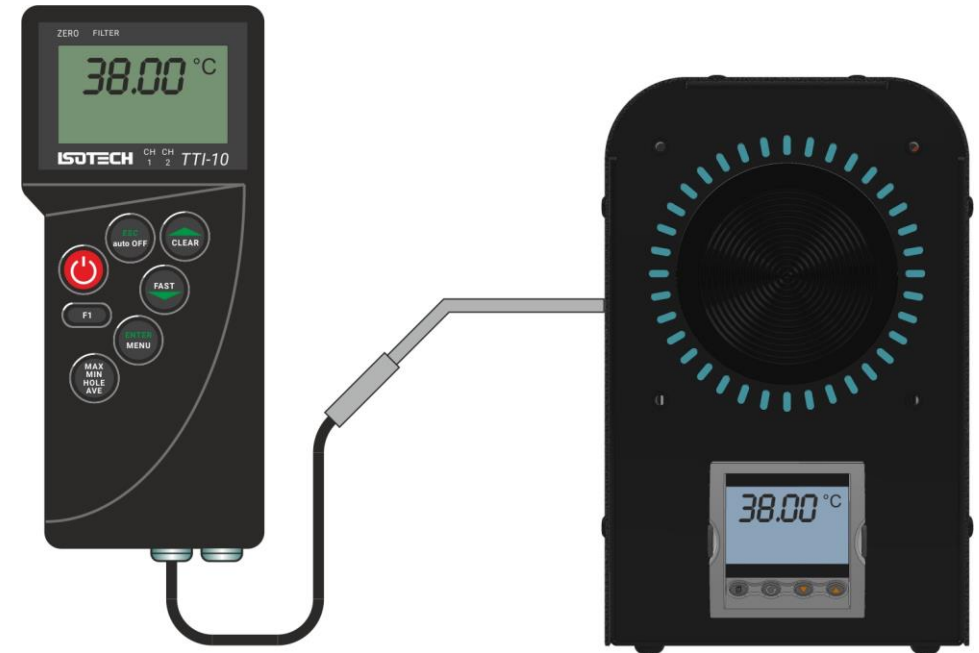
PC Interface

- Model 989 includes an RS422 Serial Interface
- There is an optional RS422 – R232 Converter Lead
- Free Download of Cal Notepad Software allows remote set temperature control and monitoring



Calibration Kit

- Model 989 has a reference pocket located behind the target plate. We can provide a Platinum Resistance Thermometer or a complete measuring system with an uncertainty of $0.02\text{ }^{\circ}\text{C}$





ISOTECH

World Leader in Temperature Metrology