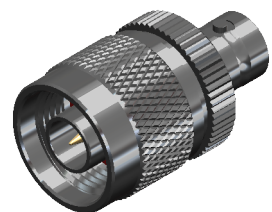
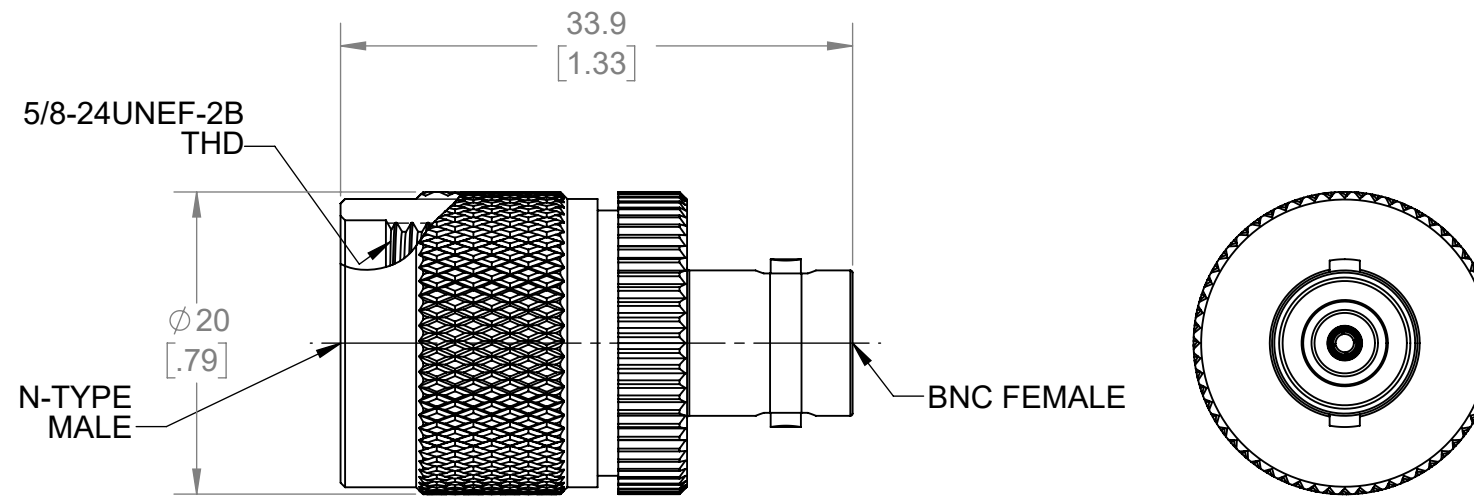


THIS IS ISSUED IN STRICT CONFIDENCE THAT IT IS NOT USED AS A BASIS FOR MANUFACTURE OR SALE AND THAT IT IS NOT COPIED, REPRINTED OR DISCLOSED TO A THIRD PARTY EITHER WHOLLY OR IN PART WITHOUT THE PRIOR WRITTEN CONSENT OF CAL TEST ELECTRONICS, INC.

REVISIONS			
REV.	DESCRIPTION	DATE	APPROVED
A	INITIAL RELEASE	7/12/2021	B. HANSEN

NOTES:

- ALL SPECIFICATIONS SUBJECT TO CHANGE WITHOUT NOTICE.
- ADAPTER TO MEET OR EXCEED ALL SPECIFICATIONS PER MIL-39012.
- MATING DIMENSIONS IN ACCORDANCE WITH MIL-STD-348.
- VSWR AND FREQUENCY RANGE SPECIFICATIONS ARE FOR REFERENCE AND ARE DEPENDANT ON CABLE TYPE AND OTHER APPLICATION SPECIFIC CONDITIONS.
- MATERIAL:
  - BODY: BRASS, WHITE BRONZE PLATED.
  - CENTER CONTACT: BeCu, GOLD PLATED
  - DIELECTRIC: PTFE
- ELECTRICAL:
  - IMPEDANCE: 50 Ω
  - FREQUENCY: DC - 4 GHz
  - INSULATION RESISTANCE: 5,000 MΩ MIN @ SEA LEVEL
  - DIELECTRIC WITHSTANDING VOLTAGE: 1,000 V MAX
  - VSWR:
    - ≤1.04:1 @ 1 GHz
    - 1.07:1 @ 1 - 2 GHz
    - 1.29:1 @ 2 - 4 GHz
  - INSERTION LOSS: 0.1 dB
- MECHANICAL:
  - TEMPERATURE RANGE: -55°C TO +165°C
- COUNTRY OF ORIGIN: CHINA
- RoHS AND REACH COMPLIANT.



ISOMETRIC VIEW  
FULL SCALE

CT3346A	BETWEEN-SERIES	IN-LINE
MODEL NUMBER	CONFIGURATION	NOTES / REFERENCE
MODEL NUMBER TABLE		
THIRD ANGLE PROJECTION 	UNLESS OTHERWISE SPECIFIED DIMENSIONS ARE IN MILLIMETERS TOLERANCES ARE: X.X = ±0.5    X.X* = ±0.5* X.XX = ±0.25 X.XXX = ±0.125 DO NOT SCALE DRAWING	
	PROJECT NO. <b>A598</b>	
MATERIAL SEE NOTES	APPROVALS	DATE
	DRAWN WDH	7/12/2021
TREATMENT N/A	CHECKER	TITLE
	ENGR. B. Hansen	3/25/2021
FINISH SEE NOTES	DESIGN ACTIVITY	SIZE <b>B</b> CAGE CODE <b>43F45</b> DWG. NO. <b>CT3346A</b> REV. <b>A</b>
SCALE <b>2:1</b>		SHEET <b>1 OF 1</b>