

Pressure Calibration Volume Controllers

QTVC (3000 psi / 210 bar)

TRANSCAT®

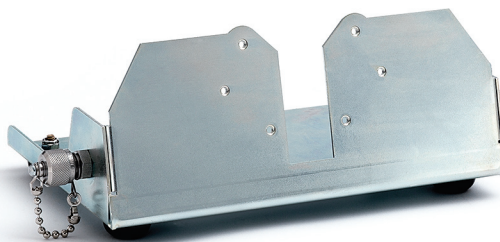
▶ Visit us at Transcat.com!

35 Vantage Point Drive Rochester, NY 14624
Call 1.800.800.5001

Perform both ultra-precise low pressure differential or high pressure static pressure calibrations with nitrogen using the same device.

Features:

- Proprietary pressure balanced fine adjustment piston allows for extremely precise, finger-tip control of pressure at 0.03 psi (2 mbar) or 3000 psi (210 bar) or any range in between.
- Fine adjust piston, fill, balance and vent valves are in one light weight, compact unit
- Includes handle, Quick-test System™ outlet connections, hoses and adapters
- Low volume Quick-test hose, gauge adapter and process connection can be attached to QTVC without thread sealant or a wrench
- Soft-seated valves make filling and venting the system very precise
- Optional stand for laboratory or table top use (QTVC-LKIT)
- Optional padded strap for field use (NPAK-STRP)
- Made in U.S.A.



QTVC-LKIT



Pressure Calibration Volume Controllers

QTVC (3000 psi / 210 bar)

Specifications		
QTVC connection type	National Pipe Thread (NPT)	British Parallel Thread (BSPP)*
Maximum pressure	3000 psi (210 bar)	3000 psi (210 bar)
Pressure media	Compressed nitrogen	Compressed nitrogen
Fine adjust resolution	± 0.0005 psi (0.035 mbar)	± 0.0005 psi (0.035 mbar)
Mechanical rotation	42 turn (pressure balanced)	42 turn (pressure balanced)
Operating temperature range	0° to 130°F (-18° to 56° C)	0° to 130°F (-18° to 56° C)
Reference connection (brass)	See below	See below
Inlet, gauge ports (brass)	Male Quick-test port (QTHA-5SB0)	Male Quick-test port (QTHA-5SB0)
Outlet ports (brass)	(2) Male Quick-test port with cap and chain (QTFT-5SB0)	(2) Male Quick-test port with cap and chain (QTFT-5SB0)
Quick-test hose 1 (brass ends)	6 ft (183 cm) long (QTQT-HOS-6')	2 m (6.6 ft) long (QTQT-HOS-2m)
Quick-test hose 2 (brass ends)	3 ft (92 cm) long (QTQT-HOS-3')	1 m (3.3 ft) long (QTQT-HOS-1m)
Process connection (brass)	(2) 1/4" male NPT (QTHA-2MB0)	(2) 1/4" female BSPP (QTHA-2FB0-RG)
Construction	Aluminum, brass, plated steel, stainless steel	Aluminum, brass, plated steel, stainless steel
Seal material	Buna-N, Teflon™, Delrin™	Buna-N, Teflon™, Delrin™
Weight	3.7 lb (2.5 kg), with stand 6.2 lb (2.8 kg)	3.7 lb (2.5 kg), with stand 6.2 lb (2.8 kg)

Ordering Information	
QTVC volume controllers with NPT connections	
Model	Description
QTVC-1MBA-6'-3'	1/8" male NPT gauge adapter (QTHA-1MBA), 2 hoses, 2 process connections
QTVC-2MBA-6'-3'	1/4" male NPT gauge adapter (QTHA-2MBA), 2 hoses, 2 process connections
QTVC-2FBA-6'-3'	1/4" female NPT gauge adapter (QTHA-2FBA), 2 hoses, 2 process connections
QTVC-0000-0-0	QTVC only, no gauge connection, no hoses, no process connections
QTVC volume controllers with BSPP connections*	
Model	Description
QTVC-2FBA-RG-2m-1m	1/4" female BSPP gauge adapter (QTHA-2FBA-RG), 2 hoses, 2 process connections
QTVC-3FBA-RG-2m-1m	3/8" female BSPP gauge adapter (QTHA-3FBA-RG), 2 hoses, 2 process connections
QTVC-4FBA-RG-2m-1m	1/2" female BSPP gauge adapter (QTHA-4FBA-RG), 2 hoses, 2 process connections

Add -FKIT	Field calibration kit - includes padded shoulder strap, metal hardware
Add -LKIT	QTVC Laboratory kit - includes non-skid stand, bulkhead male Quick-test port

* Not for sale in North American market

For accessories, repair kits and hoses see page 17. For a complete list of accessories and parts see product manual or detailed specification sheet. For a list of the most commonly used gauge and process connections see page 18. For a complete list refer to Ralston Instruments *Pressure Connection* catalog. Contact your Ralston Instruments dealer or the factory for information on reference gauges and pressure calibration kits.

TRANSCAT®

 Visit us at Transcat.com!

35 Vantage Point Drive // Rochester, NY 14624 // Call 1.800.800.5001