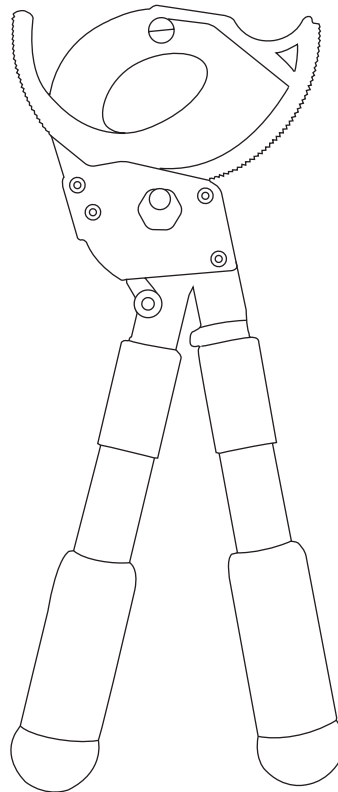


# SERVICE BULLETIN



**TRANSCAT**<sup>®</sup>

▶ Visit us at [Transcat.com](http://Transcat.com)!


35 Vantage Point Drive Rochester, NY 14624  
Call 1.800.800.5001


## 761 Ratchet Cable Cutter

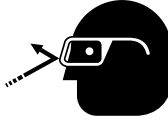



**Read and understand** all of the instructions and safety information in this manual before operating or servicing this tool.

**IMPORTANT SAFETY INFORMATION**

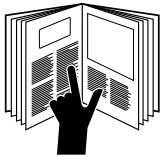
	<p><b>SAFETY ALERT SYMBOL</b></p>
<p>This symbol is used to call your attention to hazards or unsafe practices which could result in an injury or property damage. The signal word, defined below, indicates the severity of the hazard. The message after the signal word provides information for preventing or avoiding the hazard.</p>	
<p><b>⚠ DANGER</b></p>	
<p>Immediate hazards which, if not avoided, <b>WILL</b> result in severe injury or death.</p>	
<p><b>⚠ WARNING</b></p>	
<p>Hazards which, if not avoided, <b>COULD</b> result in severe injury or death.</p>	
<p><b>⚠ CAUTION</b></p>	
<p>Hazards or unsafe practices which, if not avoided, <b>MAY</b> result in injury or property damage.</p>	

	<p><b>⚠ WARNING</b></p>
	<p>Electric shock hazard: This tool is not insulated. Contact with live circuits could result in severe injury or death.</p>

	<p><b>⚠ WARNING</b></p>
	<p>Wear eye protection when operating or servicing this tool. Failure to wear eye protection could result in serious eye injury from flying debris.</p>

	<p><b>⚠ WARNING</b></p>
	<p>Keep hands and fingers clear of blades. Failure to observe this warning could result in severe injury or death.</p>

*Note: Keep all decals clean and legible, and replace when necessary.*

	<p><b>⚠ WARNING</b></p>
	<p>Read and understand all of the instructions and safety information in this manual before operating or servicing this tool. Failure to observe this warning could result in severe injury or death.</p>

All specifications are nominal and may change as design improvements occur. Greenlee Textron Inc. shall not be liable for damages resulting from misapplication or misuse of its products.

**KEEP THIS MANUAL**

**Specifications**

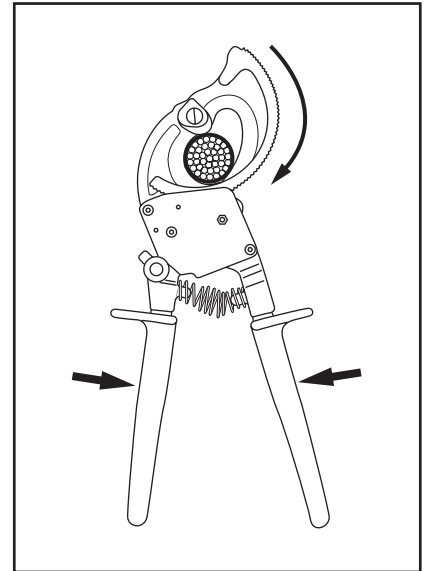
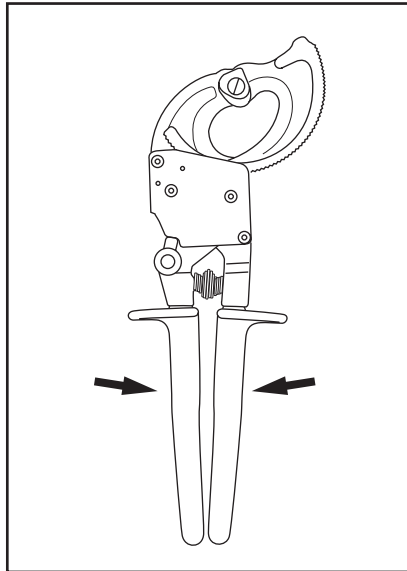
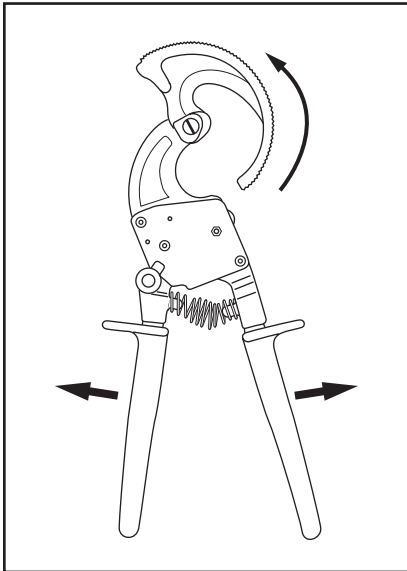
Length: 10.75" (273 mm)

**Capacity**

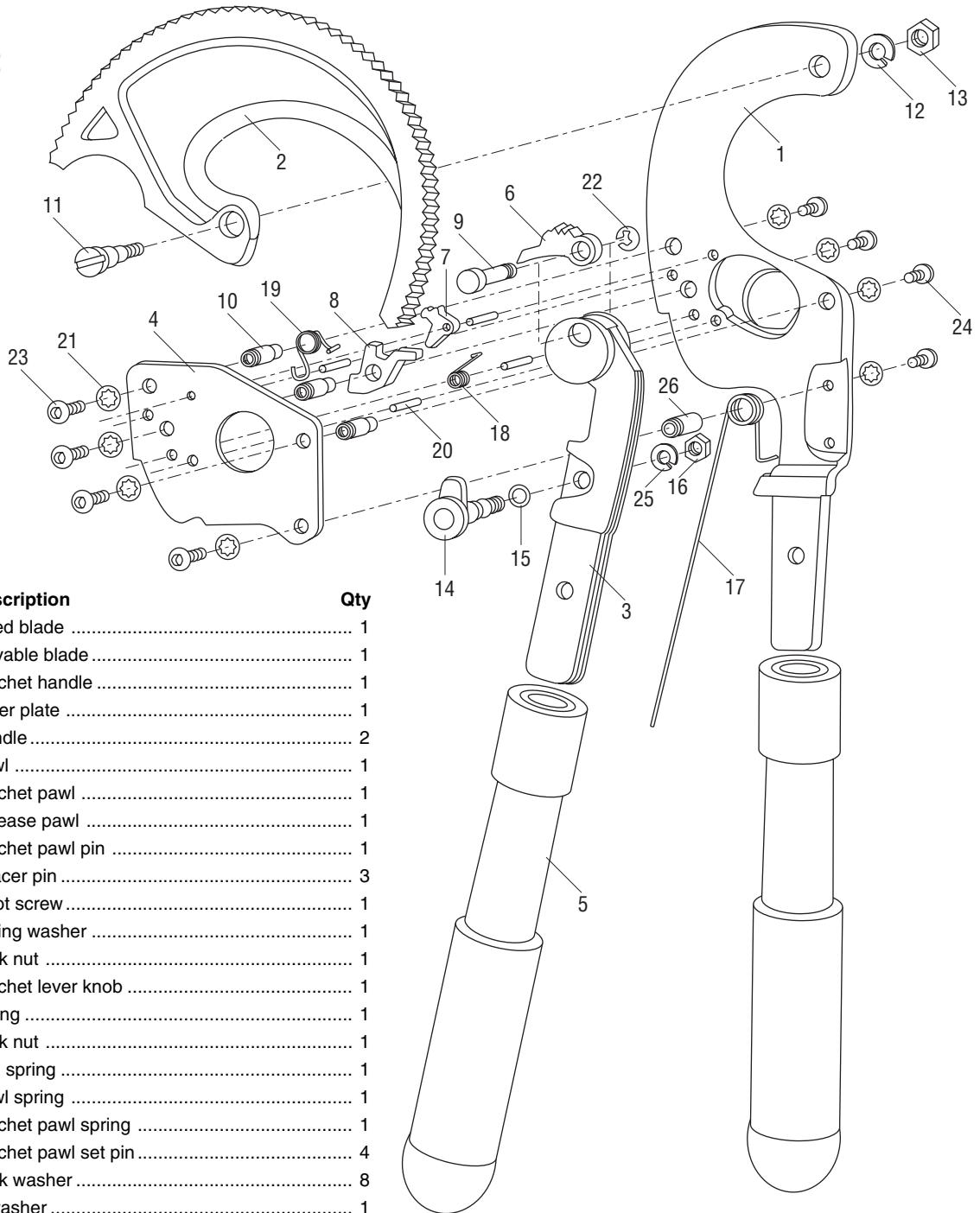
	<b>Maximum</b>
Copper	750 kcmil (MCM) (400 mm <sup>2</sup> )
Aluminum	1000 kcmil (MCM) (500 mm <sup>2</sup> )
Communications Cable	1-1/8" diameter (28 mm <sup>2</sup> )

**IMPORTANT**

Do not cut ACSR or steel.



## Illustration and Parts List



Key	Part No.	Description	Qty
1		Fixed blade .....	1
2	501 1768.8	Movable blade .....	1
3		Ratchet handle .....	1
4	501 1770.0	Outer plate .....	1
5		Handle .....	2
6		Pawl .....	1
7		Ratchet pawl .....	1
8		Release pawl .....	1
9		Ratchet pawl pin .....	1
10	501 1776.9	Spacer pin .....	3
11		Pivot screw .....	1
12		Spring washer .....	1
13		Lock nut .....	1
14		Ratchet lever knob .....	1
15		O-ring .....	1
16		Lock nut .....	1
17	501 1784.0	Coil spring .....	1
18		Pawl spring .....	1
19		Ratchet pawl spring .....	1
20		Ratchet pawl set pin .....	4
21	501 1792.0	Lock washer .....	8
22		U washer .....	1
23	501 1794.7	Set screw .....	4
24	501 1795.5	Set screw .....	4
25		Spring washer .....	1
26	501 1797.1	Spacer pin .....	1

### Repair Kits (quantities as listed above unless noted)

- 501 1762.9 Pawl kit (includes items 6–8, 18–20)
- 501 1763.7 Pivot screw kit (includes items 9, 11–13, 22)
- 501 1764.5 Frame fasteners kit (includes items 10, 21, 23, 24, 26)
- 501 1765.3 Ratchet lever knob kit (includes items 14–16, 25)
- 501 1766.1 Handle kit (includes items 3, 5[1], 17)

