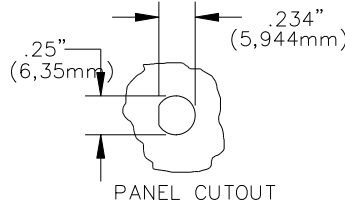
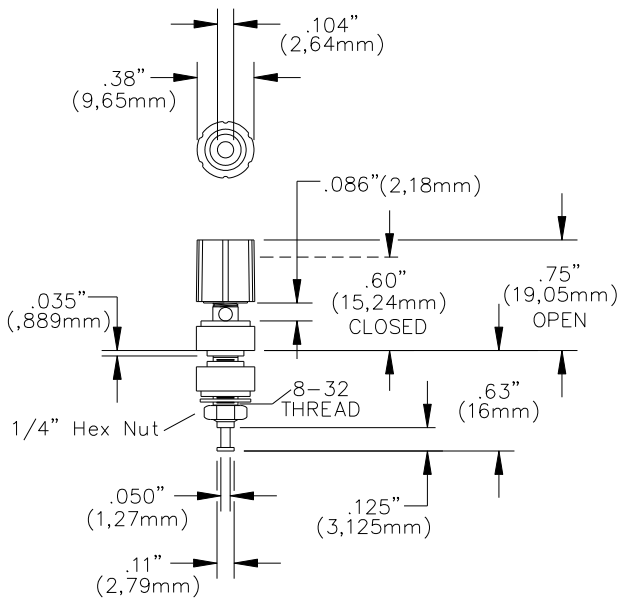


Model 2382 & 2439 Single Insulated Miniature Binding Post



FEATURES:

- ✓ Gold or Tin Plated
- ✓ Panel Thickness .07 (1,78mm) to .170" (4,32mm)
- ✓ Accepts miniature banana plug, wire or spade lug..
- ✓ Hardware Included

MATERIALS:

Insulated Captive Thumb Nut;

- Model: 2382, Gold Flash Brass;
- Model 2439, Tin Plated Brass

Binding Post Body:

- Model: 2382, Gold Plated Brass
- Model: 2439, Tin Plated Brass

Solder Turret Terminal: – Gold Flash; 2439 - Tin

- Model: 2382, Gold Flash Brass
- Model 2439, Tin Plating Brass

Thumb Nut, Mounting Base and Insulator:

Polycarbonate.

Lockwasher: Nickel Plated Steel

Hex Nut 1.4" #8-32: Nickel Plated Brass

RATINGS:

Operating Voltage: Hands free usage in controlled voltage environments: 1500 Vrms maximum.
For CE compliance: not intended for hand-held use at voltages above 33 Vrms/70 Vdc.

Current: 5 Amperes

Operating Temperature: +115°C (+239°F) Max.

ORDERING INFORMATION:

Model 2382-**Color** (Gold)

Model 2439-**Color** (Tin)

Color = 0 (Black), 1 (Brown), 2 (Red), 3 (Orange),
4 (Yellow), 5 (Green), 6 (Blue), 7 (Violet), 8 (Gray) 9 (White)

All dimensions are in inches. Tolerances (except noted): .xx = ±.02" (.51 mm), .xxx = ± .005" (.127 mm).

All specifications are to the latest revisions. Specifications are subject to change without notice.

Registered trademarks are the property of their respective companies.