

Noshok Pressure Gauges

ORDERING INFORMATION

To Order—Insert Number Code for Each Letter to Select Catalog Number
 Order Example: DK25.300-15PSI

A - B **TRANSCAT** Visit us at Transcat.com!
35 Vantage Point Drive // Rochester, NY 14624 // Call 1.800.800.5001

A Basic Unit		2½"		4"	
		25.300 1/4" NPT Bottom	25.310 1/4" NPT Back	40.300 1/4" NPT Bottom	40.310 1/4" NPT Back
B Pressure Range					
Code	Range				
30 "VAC	-30 "Hg Vacuum-0				
15 PSI	0-15 PSI				
30 PSI	0-30 PSI				
60 PSI	0-60 PSI				
100 PSI	0-100 PSI				
160 PSI	0-160 PSI				
200 PSI	0-200 PSI				
300 PSI	0-300 PSI				
400 PSI	0-400 PSI				
600 PSI	0-600 PSI				
800 PSI	0-800 PSI				
1000 PSI	0-1000 PSI				
1500 PSI	0-1500 PSI				
2000 PSI	0-2000 PSI				
3000 PSI	0-3000 PSI				
5000 PSI	0-5000 PSI				
6000 PSI	0-6000 PSI				
10000 PSI	0-10000 PSI				
15000 PSI	0-15000 PSI				

300 Series brass case liquid filled pressure gauges



25.300-5000 PSI



25.310-3000 PSI

Noshok 300 Series brass case liquid filled pressure gauges are the highest quality, most reliable liquid filled gauges available. Their one piece die cast brass case and heavy-duty bourdon tube and movement enable them to stand up to the shock and vibration encountered on the most demanding applications.

SPECIFICATIONS

Case:	One piece die cast brass
Cover Ring:	Polished brass
Lens:	Molded plexiglass with o-ring seal
Bourdon Tube:	2½": Phosphor bronze through 6000 PSI and 316SS on higher ranges. 4": Phosphor bronze through 800 PSI and 316SS on higher ranges
Movement:	Brass and nickel silver
Accuracy:	2½": ± 1.5% FS, 4": ± 1% FS
Options and Accessories:	Panel mounting options, orifices, max indicating pointers, rubber case protectors, special dials
Operating Limitations	
Working Pressure:	Dynamic: 60% of dial range, Static: 90% of dial range
Temperature:	0 to 140°F (-18 to 60°C)

Noshok Pressure Gauges

ORDERING INFORMATION

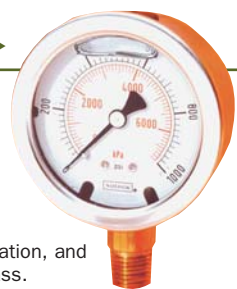
To Order—Insert Number Code for Each Letter to Select Catalog Number
 Order Example: DK25.901-1000 PSI

A - B

A Basic Unit		25.901	25.911
	Liquid Filled Pressure Gauge	1/4" NPT Bottom	1/4" NPT Back
B Pressure Range			
Code	Range		
30 "VAC	-30 "Hg VAC		
15 PSI	0-15 PSI		
30 PSI	0-30 PSI		
60 PSI	0-60 PSI		
100 PSI	0-100 PSI		
160 PSI	0-160 PSI		
200 PSI	0-200 PSI		
300 PSI	0-300 PSI		
400 PSI	0-400 PSI		
600 PSI	0-600 PSI		
800 PSI	0-800 PSI		
1000 PSI	0-1000 PSI		
1500 PSI	0-1500 PSI		
2000 PSI	0-2000 PSI		
3000 PSI	0-3000 PSI		
5000 PSI	0-5000 PSI		
6000 PSI	0-6000 PSI		
10,000 PSI	0-10000 PSI		
15,000 PSI	0-15000 PSI		

901 Series Liquid Filled Pressure Gauges

Noshok 901 Series stainless steel case liquid filled pressure gauges are high quality gauges that incorporate unique design features aimed at extended service life and reliability. They are used on industrial applications world-wide where pulsation, vibration, and shock is present and the media is not corrosive to brass.



25.901-1000 PSI

SPECIFICATIONS

Size:	2½"
Connection:	1/4" NPT bottom
Case:	304 stainless steel
Lens:	Plexiglass
Bourdon Tube:	Brass and copper alloy
Movement:	Brass
Accuracy:	±1.5% FS
Available Ranges:	Vacuum and compound through 10000 PSI
Options and Accessories:	Panel mounting options, orifices, rubber case protectors, special dials, special connections, and more
Operating Limitations	
Working Pressure:	Dynamic: 60% of dial range; Static: 90% of dial range
Temperature:	0 to 140°F (-18 to 60°C)

CALIBRATION INFORMATION

CPRE24	Transcat Certified Calibration (for Pressure Gauges)	CALL
PPRE24	Transcat Certified Plus Calibration (for Pressure Gauges)	CALL
CPRE25	Transcat Certified Calibration (for Vac Gauges)	CALL
PPRE25	Transcat Certified Plus Calibration (for Vac Gauges)	CALL