

PosiTest®

TRANSCAT®
Trust in every measure

Visit us at Transcat.com

sales@transcat.com

1.800.828.1470

Pull-Off Adhesion Tester

Measures adhesion of coatings to metal, wood, concrete and other substrates – revolutionary self-alignment feature and pull rate indicator.

New
Automatic
Model



***Now available
in 2 models...***

Manual or Automatic

DeFelsko®
The Measure of Quality

Measures the force required to pull a specified test diameter of coating away from its substrate using hydraulic pressure.

AT-A Automatic

New electronically controlled hydraulic pump automatically applies smooth and continuous pressure at a user-specified rate-of-pull

USB port for downloading

AC Adapter port charges batteries or powers instrument

Environmentally sealed, one-piece metal enclosure

Cutting tool for isolating test area

Reach difficult areas with 5 ft (1.5 m) quality flex hose

WEATHERPROOF

Self-aligning, quick-coupling secures dollies to actuator

Single-use, self-aligning dollies ensure even, consistent pull-offs

Both Models Feature...

Simple

- Portable – requires no external power source – ideal for lab and field use
- Pull Rate Indicator allows operator to easily monitor and adjust the rate of pull in accordance with international test methods
- Easily select dolly sizes, change measurement units or store readings, with the touch of a button
- Conversion charts not required – tester automatically calculates pressure based on dolly size
- Inexpensive, single-use dollies eliminate cleaning for re-use and can be kept as a permanent record
- Each kit comes with everything needed for testing

Durable

- Environmentally sealed enclosure – weatherproof, dustproof and shockproof
- Can be used in any position
- Rugged carrying case
- Two year warranty

Accurate

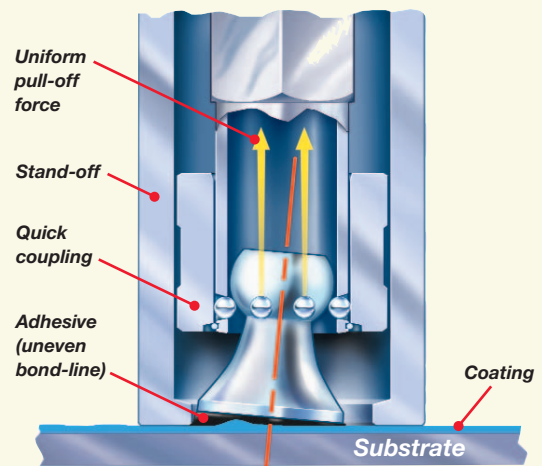
- Every PosiTest Adhesion Tester pressure system is calibrated and certified to $\pm 1\%$ accuracy using NIST traceable load cell
- Self-aligning aluminum dolly enables accurate measurements on smooth or uneven surfaces
- Hi-grade, industrial pressure sensor ensures continued accuracy
- Conforms to national and international standards including ASTM D4541/D7234, ISO 4624/16276-1, AS/NZS 1580.408.5 and others

Versatile

- Internal Memory stores maximum pull-off pressure, rate of pull, test duration and dolly size
- Optional PosiSoft® software available for downloading
- 10, 14, 20 or 50 mm dollies maximize capability and measurement resolution across a wide range of bond strengths
- LCD displays pressure value in psi or MPa

Self-Alignment Feature

The PosiTest Adhesion Tester compensates for misalignment. The self-aligning, quick-coupling actuator and spherical articulating dolly head enable uniform distribution of the pulling force over the surface being tested, preventing a one-sided pull-off.



PosiTest® **AT Manual** Adhesion Tester



AT Manual

- Heavy-duty manual hydraulic pump designed to apply smooth and continuous pull-off pressure with a single stroke
- Pull Rate Indicator to manually monitor and adjust the rate of pull
- Includes 2 AAA alkaline batteries

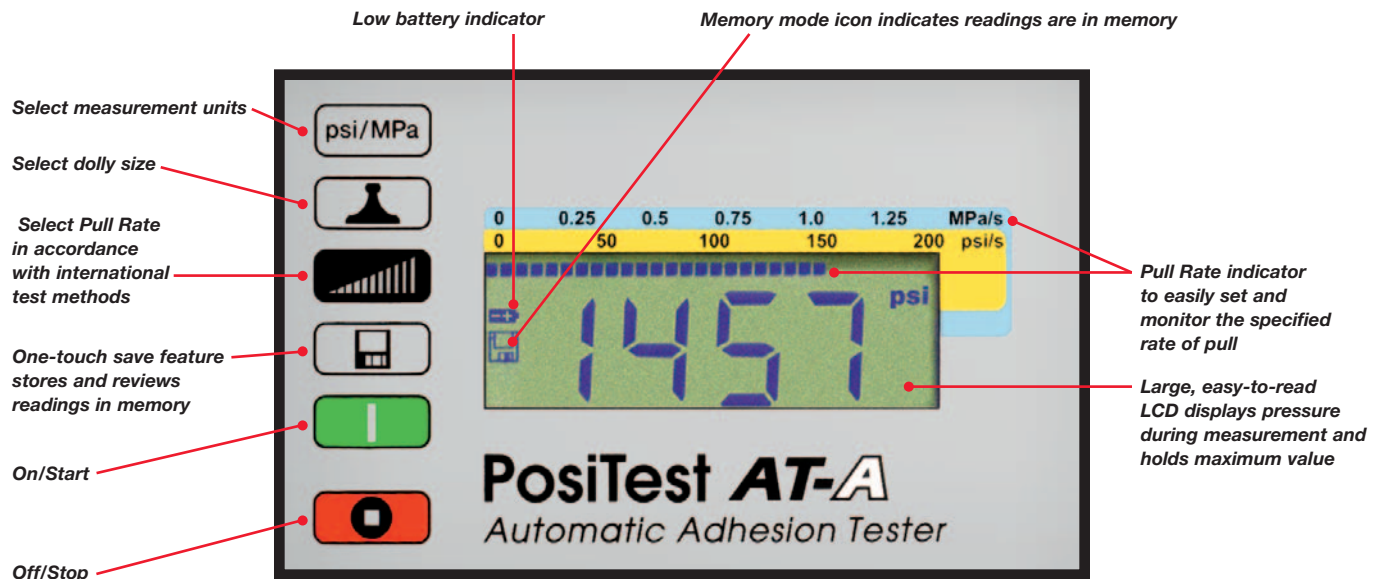
PosiTest® **AT-A Automatic** Adhesion Tester

- New electronically controlled hydraulic pump automatically applies smooth and continuous pull-off pressure at a user-specified rate
- Test with the simple push of a button. No twisting, pumping or cranking. No valves to close, needles to reset, or scales to adjust
- User selectable pull rates ensure compliance with international test methods for a variety of industries including metal, wood and concrete
- Built-in rechargeable batteries perform over 200 tests per charge. Continue testing with AC power while batteries recharge. Supplied with universal AC Adapter



AT-A Automatic

Rugged, portable instrument ideal for lab and field use





Specifications

Dolly Size (mm)*	20 mm
Resolution	1 psi (0.01 MPa)
Accuracy	± 1% Full Scale
Adhesion Strength**	0 – 3000 psi (0 – 20 MPa)

*Additional dolly sizes available to meet specific measuring needs – contact supplier for details. **Varies with dolly size

Both Kits include: Adhesion tester with digital display, 20 mm aluminum test dollies (20), abrasive pad, cutting tool, adhesive with mixing sticks and palettes, cotton swabs, instruction booklet and video, Certificate of Calibration traceable to NIST, two-year warranty, and sturdy, lightweight carrying case

Kit Weight (with case): 12 lbs / 5.5 kg

Carrying Case Dimensions: L – 17 in / 43 cm x W – 13 in / 33 cm x H – 6 in / 15 cm

Power: Manual – 2 AAA batteries • Automatic – Built-in rechargeable NiMH batteries with recharger/AC power supply

Options



50 mm Accessory Kit

- Ideal for lower bond strength finishes such as coatings on wood, concrete and plastic
- Larger surface area of dolly provides improved low range precision and repeatability
- Range 0 – 500 psi (0 – 3.5 MPa)
- Includes 50 mm stand-off, 50 mm hole saw and 50 mm aluminum test dollies (12)

Drilling Template for 20 mm and 50 mm Dollies

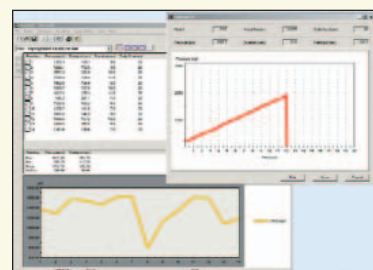
- Drilling template and drill bits to isolate test area, ideal for thicker coatings on concrete

Adhesive Kit

- Additional adhesive, mixing sticks, palettes and cotton swabs

PosiSoft® for Windows® analysis software

- Displays pressure, rate, test duration and dolly size for up to 200 pulls
- Calculates max, min, mean and standard deviation
- Prints and displays basic charts and histograms
- Real time graphing of individual pulls for a more detailed analysis of applied pressure over time (AT Manual only)
- Allows entry of notes and annotations
- Exports to a document or spreadsheet
- Multi-language support including English, German, Italian, Spanish and French
- Includes USB cable
- Free updates



Dollies

- Additional supplies of 10, 14, 20 and 50 mm dollies



DeFelsko®
The Measure of Quality

DeFelsko Corporation

802 Proctor Ave. • Ogdensburg, New York 13669 USA

Toll Free: 1-800-448-3835 • Phone: +1-315-393-4450 • Fax: +1-315-393-8471

Email: techsale@defelsko.com • Web: www.defelsko.com

