



## Product Data

### Special Application Gauges

## Series P-600

# Welding and Compressed Gas Gauges

## TRANSCAT®

▶ Visit us at [Transcat.com!](http://Transcat.com!)

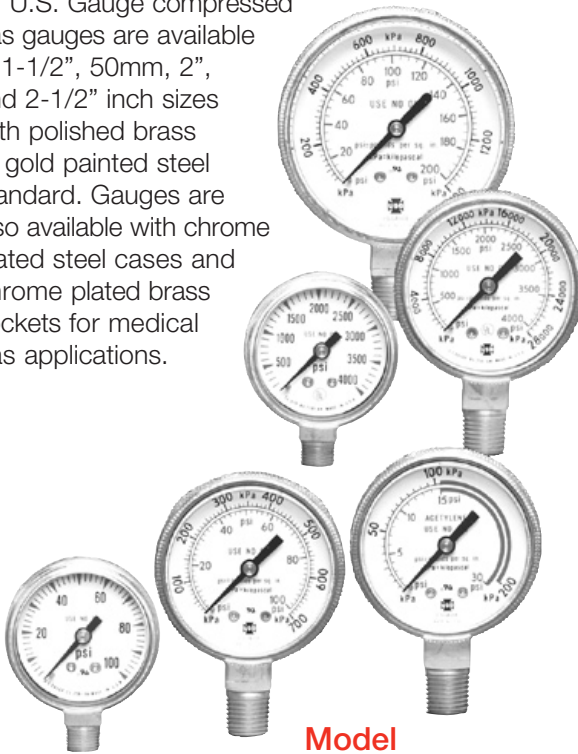
35 Vantage Point Drive // Rochester, NY 14624 // Call 1.800.800.5001

### DESCRIPTION

AMETEK U.S. Gauge offers a wide variety of welding and compressed gas gauges used on various types of regulators. The high pressure gauges are used for measuring cylinder or tank pressure. The low pressure gauges are used on the downstream side of the regulator to indicate regulated, reduced pressure.

The low pressure gauges (30 psi to 1499) are UL 252A recognized, Class V (3000 psi test pressure) and above. High pressure gauges are UL 404 listed. Cleanliness for all gauges is in accordance with Level IV of ASME B40.100-2005.

U.S. Gauge compressed gas gauges are available in 1-1/2", 50mm, 2", and 2-1/2" inch sizes with polished brass or gold painted steel standard. Gauges are also available with chrome plated steel cases and chrome plated brass sockets for medical gas applications.



Model P-600

### SPECIFICATIONS

SIZE: 1-1/2", 50mm, 2", and 2-1/2"

CASE: Polished brass or brass painted steel (chrome plated steel cases available in minimum order quantities.)

MODEL (1-1/2", 2", and 2-1/2")

P-601 – Brass case, high pressure

P-612 – Brass case, low pressure

P-607 – Steel case, high pressure

P-618 – Steel case, low pressure

(50mm)

P-697 – Steel case, high pressure (painted gold or black)

P-698 – Steel case, low pressure (painted gold or black)

RANGES:

High Pressure (Models P-601, P-607, or P-697) 1500 psi, 2000 psi, 3000 psi, and 4000 psi (P-697 only available in 4000 psi)

Low Pressure (Models P-612, P-618, or P-698) 15 psi, 30 psi, 60 psi, 100 psi, 160 psi, 200 psi, 400 psi, 600 psi (2" and 2-1/2" version only), and 1000 psi (2" and 2-1/2" version only)

UL High Pressure (Models P-601, P-607, or P-697) UL 404 listed. (Only 4000 psi for 50mm gauge P-697)

Low Pressure (2" and 2-1/2" Models P-612, P-618) 30 psi, 60 psi, and 100 psi UL 252A Class V recognized; 160 psi UL 252A Class VI recognized; 200 psi, 400 psi, 600 psi, and 1000 psi UL 252A Class VII recognized\*. For 50mm 30 psi UL 252A Class III, 60 psi and 100 psi Class V, and 400 psi Class VII.

ACCURACY: ±3-2-3% of span (Grade B)

CONNECTION: 1-1/2" brass 1/8-27 NPT LM; 2" and 2-1/2" brass 1/4-18 NPT LM Center back mount also available, subject to minimum order quantity

BOURDON TUBE MATERIAL:

High Pressure (Models P-601, P-607, or P-697)

Phosphor bronze, silver soldered

Low Pressure (Models P-612, P-618, or P-698)

15 psi beryllium copper, 30 psi to 1499 psi phosphor bronze

POINTER: Galvalume Aluminum, black finish

DIAL: Galvalume, white background with black markings

Major graduations and "USE NO OIL" in red  
Custom dials and dual scales available with minimum order quantity and dial set-up charge

WINDOW: One-piece polycarbonate

MOVEMENT: Brass

\* (1-1/2" Models P-612 and P-618) - 30, 60 and 100 psi UL252A Class V recognized; 160 psi Class VI recognized; 200 psi and 400 psi UL252A Class VII recognized  
(50 mm Model-698) - 30 psi; UL252A Class III; 60 psi and 100 psi UL252A Class V; and 400 psi UL252A Class VIII



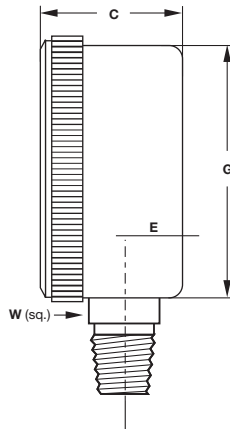
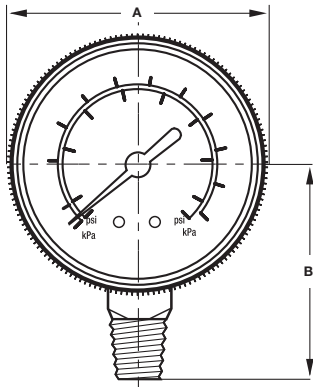


# Product Data

Special Application Gauges

## Series P-600

## Welding and Compressed Gas Gauges

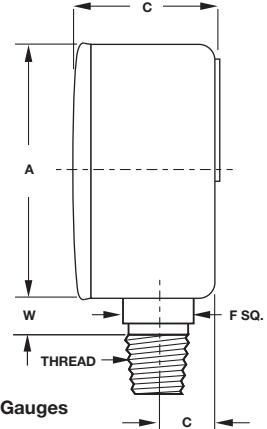


**INCHES  
(MM)**

**UL 252A NOTE:**  
**UL LOW PRESSURE:**  
1-1/2" 30-160 psi = CLASS V  
200 psi = CLASS VI  
300-400 psi = CLASS VII

2" AND 2-1/2" 15 psi = CLASS III  
30-140 psi = CLASS V  
150-160 psi = CLASS VI  
200-1000 psi = CLASS VII

50mm 30 psi = CLASS III  
60 psi = CLASS V  
100 psi = CLASS V  
400 psi = CLASS VII



50 mm Gauges

MODEL NO.	DIAL SIZE	CASE	STYLE	UNIT	A	B	C	E	G	W
P-601	1-1/2" Low Mount	Brass Polished or Steel	1	inches	1.78	1.40	0.91	0.34	1.63	0.43
				mm	45.2	35.60	23.1	8.6	41.4	10.9
P-607	1-1/2" Center Back Mount		1	inches	1.78	—	0.92	—	1.63	0.44
				mm	45.2	—	23.4	—	41.4	11.2
P-612	2" Low Mount	Brass Polished or Steel	1	inches	2.26	1.95	1.13	0.43	2.05	0.55
				mm	57.4	49.5	28.7	10.9	52.1	14
P-618	2-1/2" Low Mount		1	inches	2.85	2.33	1.22	0.45	2.67	0.55
				mm	72.4	59.2	31	11.4	67.8	14
P-697	50mm	Steel Painted	2	inches	1.92	1.16	1.16	0.40	0.25	0.25
			mm	48.8	29.5	29.5	10.2	6.4	6.4	
P-698	50mm	Steel Painted	2	inches	1.92	1.16	1.16	0.40	0.25	0.25
			mm	48.8	29.5	29.5	10.2	6.4	6.4	





# Product Data

Special Application Gauges

## Series P-600

## Welding and Compressed Gas Gauges

### SPEC NUMBER SELECTION CHART

Model Number	Range**	1-1/2" Spec No.	2" Spec No.	2-1/2" Spec No.
<b>P-612</b>	15 psi	-	-	50665A
	30 psi	166692A	165509A	165616A
	30 psi*	166691A	165507A	165614A
	60 psi	-	165567A	165660A
	100 psi	166359A	164257A	164285A
	200 psi	166361A	164259A	164287A
	400 psi	166364A	164261A	164289A
	500 psi	-	-	165064A
	600 psi	146474A	164262A	164290A
<b>P-601</b>	3000 psi	146451A	144202A	144203A
	4000 psi	146454A	143403A	143404A

\* Red Band

\*\*Dual scale dials are available, please contact Customer Service at 215-257-6531

P-612 – 30 psi, 60 psi, and 100 psi UL 252A Class V recognized; 200 psi, 400 psi, 500 psi, and 600 psi UL 252A Class VII recognized; P-601 – UL404 listed

Model Number	Range**	1-1/2" Spec No.	2" Spec No.	2-1/2" Spec No.
<b>P-618</b>	30 psi	166693A	165521A	165621A
	30 psi*	166685A	165522A	165620A
	60 psi	-	165557A	165663A
	100 psi	-	164677A	164956A
	200 psi	166532A	164264A	164292A
	400 psi	166365A	164816A	165055A
	600 psi	-	164829A	165071A
<b>P-607</b>	4000 psi	146532A	139660A	156187A

\* Red Band

P-618 – 30 psi, 60 psi, and 100 psi UL 252A Class V recognized; 200 psi, 400 psi, and 600 psi UL 252A Class VII recognized; P-607 – UL404 listed

# TRANSCAT

▶ Visit us at [Transcat.com!](http://Transcat.com!)

35 Vantage Point Drive // Rochester, NY 14624 // Call 1.800.800.5001

# AMETEK®

© 2008, by AMETEK, Inc. All rights reserved.  
Printed in the U.S.A. 908PDF (160166)

**ISO 9001:2000**  
CERTIFIED

Specifications are subject to change without notice. Visit our Web site for the most up-to-date information.