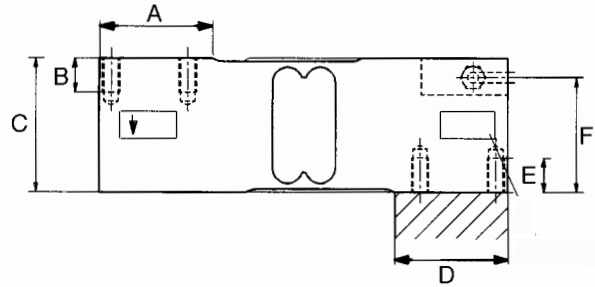
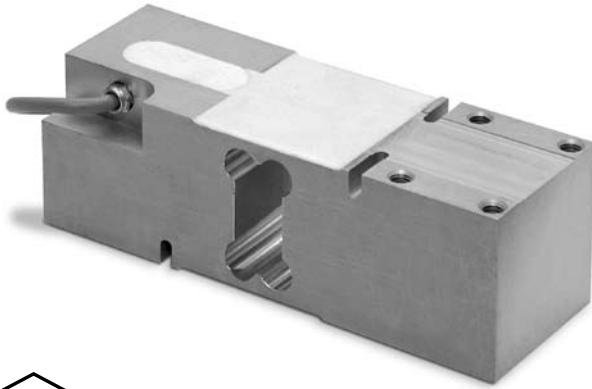
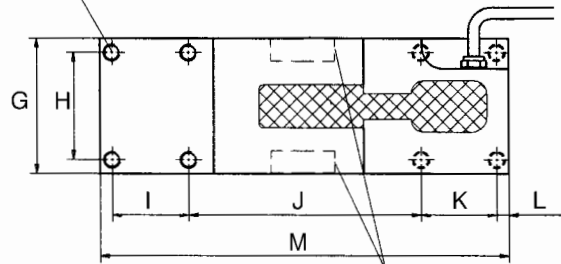


# RLPWM16 Single Point, Aluminum IP67, NTEP 1:5000 Class III Single Cell



5/16-18 UNC-2b (8pls)



reduced width in this area  
at 50 kg



Picture is a representation of actual product

RATED CAPACITY	DIMENSIONS												
	A	B	C	D	E	F	G	H	I	J	K	L	M
<b>kg/mm</b>													
50-660	52	16	62.3	52	16	52.3	63	50	35	107	35	5.5	188
<b>lb/inches</b>													
110.2-1455.5	2.04	.62	2.45	2.04	.62	2.05	2.48	1.96	1.37	4.21	1.37	.21	7.40

## SPECIFICATIONS:

**Full Scale Output:** 2.0 mV/V  
**Bridge Resistance:** 350 ohms, nominal  
**Material/Finish:** Aluminum  
**Temperature:** Compensated temperature range  
 14°F to 104°F/-10°C to 140°C  
**Safe Overload:** 150% Full scale  
**Rated Excitation:** 10V DC (15V maximum)  
**Total Error:** 0.02% Full scale  
**Insulation Resistance:** 1000 megohms

**Seal Type:** Environmentally-sealed, IP67  
**Cable Length:** 3.1 m/10'  
**Cable Color Code:** Green..... + Excitation  
 Black..... - Excitation  
 Blue..... + Sense  
 Brown..... - Sense  
 Red..... + Signal  
 White..... - Signal  
**Warranty:** Two-year limited warranty  
**Max Base:** 24" x 24"

## RLPW12 ORDER INFORMATION

Load Rating	Part #
*50 kg (110.2 lb) .....	91684
75 kg (165.4 lb) .....	91686
100 kg (220.5 lb) .....	91687
150 kg (330.7 lb) .....	91688
200 kg (440.9 lb) .....	91689
250 kg (551.2 lb) .....	91690
300 kg (661.4 lb) .....	91691
500 kg (1102.3 lb) .....	91692
660 kg (1455.5 lb) .....	91693

\*NTEP pending

## INTERCHANGEABLE PRODUCTS

Manufacturer	Model
HBM .....	(see page 247) PW16
Vishay TedeA-Huntleigh .....	(see page 342) 1260
Rice Lake .....	RL 1260