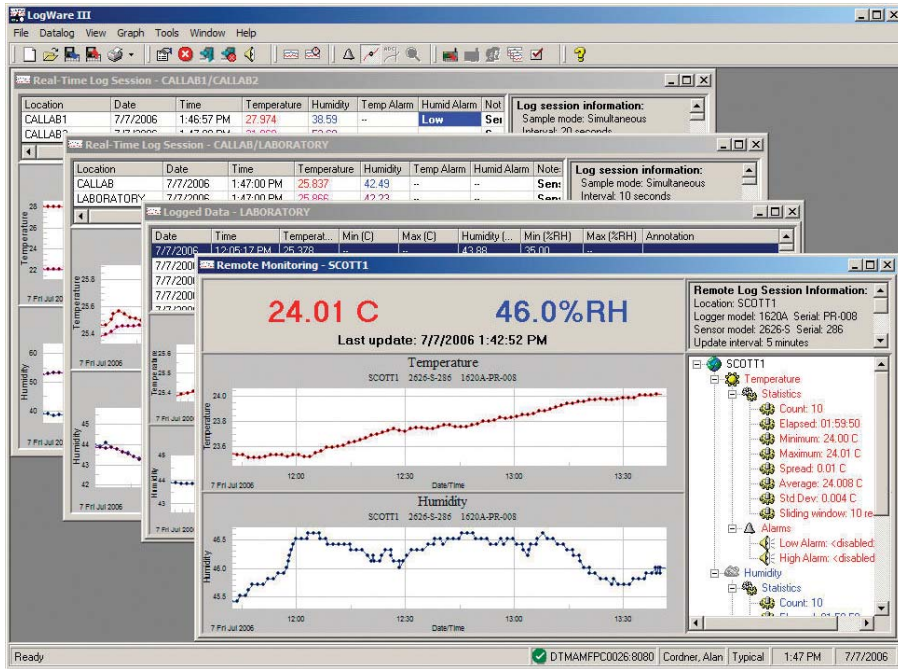


LogWare III



- Supports Ethernet, 802.15.4 wireless, and RS-232 communication
- Contacts users via email to PDAs and cell phones
- Shows real-time or historical data using customized graphs
- Seamlessly integrates with MET/CAL® software

LogWare III is a Windows® application that retrieves, stores, and analyzes data from the Hart's 1620A "DewK" Thermo-Hygrometer. As client-server or stand-alone software, it remotely monitors and logs an unlimited number of concurrent log sessions into a single database. That means data from many DewKs can be managed in real time via Ethernet, RS-232, or wireless connections.

Data may be logged from one or both of a DewK's sensors, providing up to two temperature and two humidity inputs for each DewK.

LogWare III allows you to customize your graph trace color, alarms, and statistics as you go. You can start/stop log sessions and modify sample intervals from your computer.

LogWare III supports "hot-swapping," allowing you to remove and replace sensors without shutting down the log session. LogWare III also supports security features such as passwords for individual users or groups/teams, a built-in administrator account, pre-defined user groups, and customizable permissions to ensure the integrity of all stored data.

Never again be the last to know about a problem. Customizable email settings allow you to send emails to designated recipients, including cell phones and PDA's, when a log session begins, ends, or is aborted; when the DewK's battery is low; when a sensor calibration is due; or when a temperature/humidity alarm is exceeded.

If you cannot be reached via email, you can always arrange to be paged instead. Data stored on the DewK can be imported into the software, which is a handy feature when power outages disable the network.

Are you ready for a deep dive into your data? Historical data can be viewed by sensor (model/serial number) location, or log session and displayed in a spreadsheet-style grid.

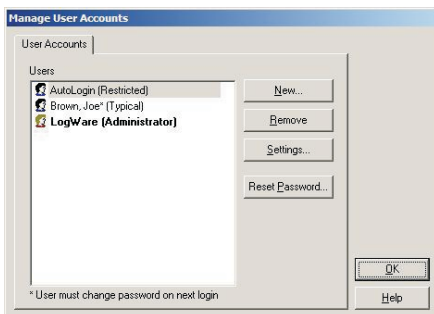
Logged data can also be exported to HTML, RTF, or ASCII text for use in your analytical software, or simply print historical data and graphs.

Customizable graphs in LogWare III with zooming capability are an easy way to analyze your data history, and data points that need to be explained can be highlighted, annotated, and referred to later. LogWare III statistics include min, max, spread, average, and standard deviation functions, and printed reports keep track of the number of temperature and humidity measurements that were found to be out of tolerance.

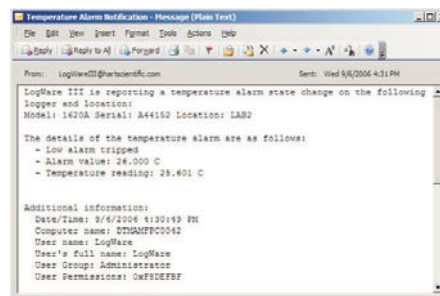
Ordering information

9936A	LogWare III Software (Single License)
9936A-L1†	Additional 1-Pack License, LogWare III Software
9936A-L5†	Additional 5-Pack License, LogWare III Software
9936A-L10†	Additional 10-Pack License, LogWare III Software
9936A-LST†	Additional Site License, LogWare III Software
9936A-UPG	9936A Software Upgrade from version 1.x

†Additional licences require the purchase and installation of 9936A single license.



Manage user accounts



Temperature alarm e-mail