



Product Data

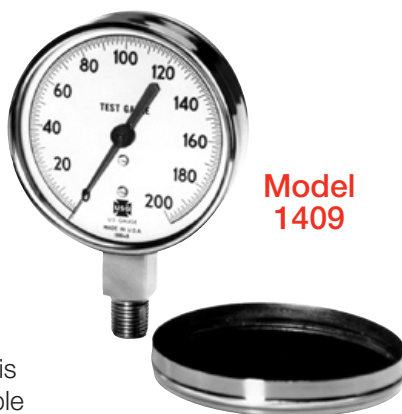
Test Gauges

Model 1409 3" Portable Test Gauges

DESCRIPTION

U.S. Gauge 3" test gauge combine high accuracy, rugged construction and portability for a wide range of field and production testing applications.

The instrument is available in a durable ABS chrome plated case designs. Optional felt-lined cover protects window against scratching or breakage. Test gauges incorporate bourdon tube sensing elements for a wide selection of ranges from 30 up to 5000 psi. A knife-edged, adjustable pointer improves viewing and simplifies front zero calibration.



SPECIFICATIONS

DIAL SIZE: 3"

CASE: ABS, chrome plated

RING: ABS, chrome plated

COVER (Optional): ABS, chrome plated

WINDOW: Polycarbonate

POINTER: Knife-edged, black, adjustable

DIAL: Steel, white background with black markings. Arc of calibration on model 1409 is 300° except 0 to 5000 psi range arc is 270°

MOVEMENT: Geared with moving parts of dissimilar metals to minimize friction and wear

BOURDON TUBE:

Phosphor bronze: 30 through 1000 psi

Beryllium copper: 1500 through 5000 psi

CONNECTION: 1/4-18 ANPT low mount, brass

ACCURACY:

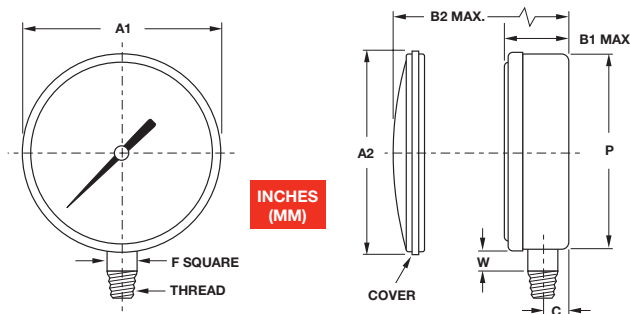
±0.5% of span in 0 to 30 through 0 to 1000 psi (Grade 2A)

±1% of span in 0 to 1500 psi through 0 to 5000 psi (Grade 1A)

STANDARD RANGES

MAXIMUM INDICATION	FIGURE INTERVALS	SMALLEST INTERVALS
30	2	0.1
60	5	0.2
100	10	0.5
160	10	1
200	20	1
300	20	1
600	50	2
1000	100	5
1500	150	10
2000	200	10
3000	500	20
5000	500	25

Pressure ranges in psi unless otherwise indicated



MODEL	UNIT	A1	A2	B1	B2	C	F	P	W
1409 (3")	inches	3.40	3.55	1.38	1.69	.54	.625	3.23	.67
	mm	86.36	90.17	35.81	40.64	13.72	16.00	82.04	17.02





Product Data

Test Gauges

Model 1409 3" Portable Test Gauges

SPEC NUMBER SELECTION CHART

3" Portable Test Gauges	Model No. 1409 1/4-18 ANPT, Low Mount
Bourdon Tube	Phosphor Bronze (30 psi through 1000 psi) Beryllium Copper (1,500 psi through 5,000 psi)
Connection	Brass
Range	Spec No.
0-30 psi	161947
0-60 psi	161948
0-100 psi	161949
0-160 psi	161950
0-200 psi	161951
0-300 psi	161952
0-600 psi	161953
0-1000 psi	161954
0-1500 psi	161955
0-2000 psi	161956
0-3000 psi	161957
0-5000 psi	161958
Optional Protective Cap	161959



 Visit us at Transcat.com!