

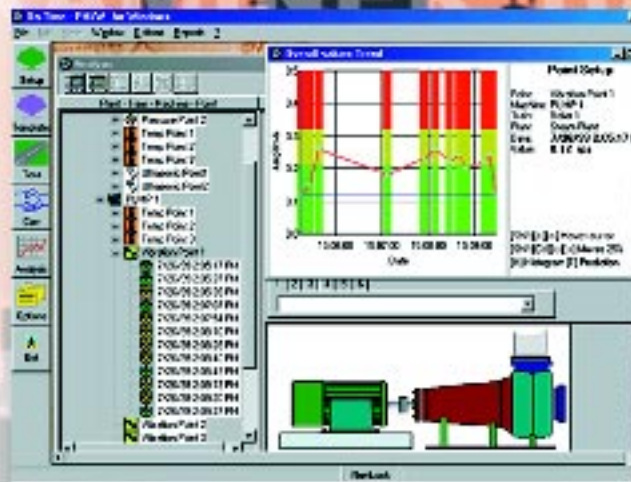
# EXAMINER 1000 and ON-TIME TRENDING SOFTWARE

*Affordable Predictive Maintenance Solutions*

## TRANSCAT

▶ Visit us at [Transcat.com!](http://Transcat.com!)

35 Vantage Point Drive // Rochester, NY 14624 // Call 1.800.800.5001



Machine	VIBRATION SEVERITY PER ISO 2372			
	Class I small	Class II medium	Class III large rigid foundation	Class IV large soft foundation
0.33	0.23			
0.50	0.40			
0.71	0.50			
1.00	0.70			
1.58	1.00			
2.24	1.40			
3.15	2.00			
4.50	2.80			
6.30	4.00			
8.91	5.60			
12.6	8.00			
17.8	11.2			
25.1	16.0			
35.5	22.4			
50.0	31.5			
70.8	45.0			
100.0	63.0			
141.3	89.6			
200.0	126.0			
282.0	179.2			
398.0	252.0			
562.0	355.0			
794.0	500.0			
1100.0	700.0			
1540.0	980.0			
2150.0	1370.0			
3000.0	1960.0			
4200.0	2740.0			
5800.0	3800.0			
8000.0	5280.0			
11000.0	7360.0			
15000.0	10240.0			
21000.0	14180.0			
29000.0	19760.0			
40000.0	27440.0			
55000.0	37920.0			
75000.0	52800.0			
105000.0	73600.0			
145000.0	102400.0			
200000.0	141800.0			
275000.0	197600.0			
380000.0	274400.0			
520000.0	379200.0			
720000.0	528000.0			
1000000.0	736000.0			



# EXAMINER 1000

## Vibration Meter and Electronic Stethoscope



EXAMINER 1000  
Made in the USA



The EXAMINER 1000 is a hand-held, battery powered, over-all vibration meter and electronic stethoscope. The EXAMINER is ideal for use in predictive maintenance programs aimed at improving machinery reliability and enhancing productivity. This lightweight, cost effective meter provides the most common features required for overall vibration severity testing per ISO 10816.

*“Hear what you feel.”* A Craftsman’s experience is hard to replace. The EXAMINER 1000 is a digital electronic stethoscope providing the *human interface* needed to understand and confirm vibration values on the display. The provided headphones allow the Craftsman to use techniques they already know to gain confidence in the use of the EXAMINER and vibration trending techniques.



Standard Components included in the Kit

- EXAMINER 1000 includes:
- Digital Vibration Meter and Electronic Stethoscope
  - Accelerometer with integral cable
  - Ballistic Nylon Field Case
  - Machinery Data Workbook
  - Operators Manual
  - Magnetic base
  - Stringer probe
  - Headphones

### Applications

- Rolling Element Bearings
- Motors AC/DC
- Pumps
- Gearboxes
- Compressors
- Fans

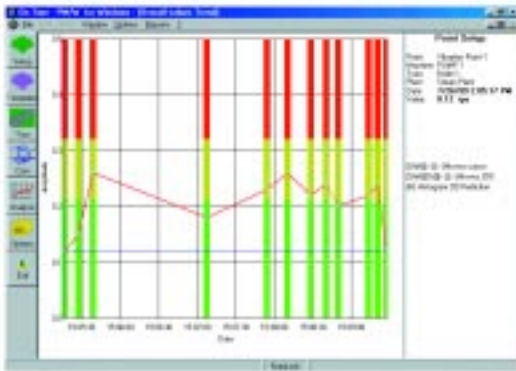
Overall Vibration Severity Chart provides instant status of measured machinery.

VIBRATION SEVERITY PER ISO 10816						
	Machine		Class I small machines	Class II medium machines	Class III large rigid foundation	Class IV large soft foundation
	in/s	mm/s				
Vibration Velocity Vrms	0.01	0.28				
	0.02	0.45				
	0.03	0.71		good		
	0.04	1.12				
	0.07	1.80				
	0.11	2.80		satisfactory		
	0.18	4.50				
	0.28	7.10		unsatisfactory		
	0.44	11.2				
	0.70	18.0				
0.71	28.0		unacceptable			
1.10	45.0					

# ON-TIME TRENDING SOFTWARE

## *32-bit Condition Monitoring Software Program*

On-Time Trending Software is a simple-to-use, graphical program designed for complete condition-based maintenance. Users log entries into the system for any type of measurement. Set alarm levels and be instantly notified upon any violation. Users can build multiple databases with all the familiar ease of the Windows operating system. On-Time will support virtually any type of graphics-Spectrograms for lubricant analysis, Thermographs from digital infrared cameras, scanned images and digital camera shots, even paint program images or any BMP format.



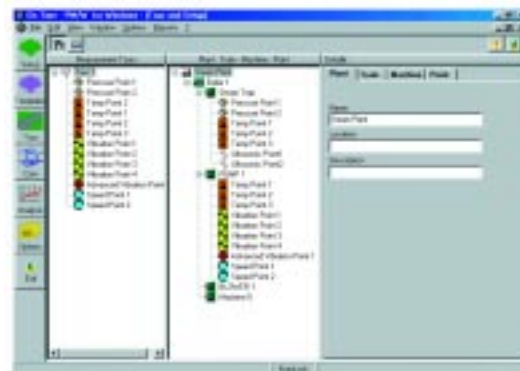
On-Time provides all the tools needed to store, compare and trend measurements along with maintenance notes, in one, easy-to-use graphical software. On-Time is modular with three different levels: **GP (general purpose)** entry-level for use with simple instruments like temperature meters, tachometers and even digital multi-meters. **CM (condition monitoring)** used with predictive maintenance programs which include vibration measurements. **MA (machinery analysis)** advanced features support FFT signature analysis and data collection with availability of protocols and an open database structure.

### See the Results

Graphic trends are automatically built and displayed with user set alarms. Instant machinery condition is visually presented, you know exactly which machines are in violation. Scroll through each point to see the value and date time group displayed.

### Powerful Data Management

On-Time software manages all the key machinery operating conditions measured by the EXAMINER 1000 or any meter. Manual entry of overall vibration (ISO), envelop, speed, temperature, pressure, load, amperes, you name it!



### Plan your work

Save maintenance dollars by working on the equipment that needs attention. Forecast trending allows planned outages and accurate/timely spare parts ordering. Minimize unplanned maintenance.

### We speak your language

On-Time is available in English and Spanish versions. There is support for a universal language editor for additional languages. On-Time software is Y2K compliant. Need to upgrade? Connect to [www.monarchmonitoring.com](http://www.monarchmonitoring.com) for more information.

# EXAMINER 1000 and ON-TIME TRENDING SOFTWARE

## Technical and Ordering Information

Technical Data EXAMINER 1000	
Vibration Sensor	Piezoelectric accelerometer 100 mV/g
Display	LCD 3.5 digit with measurement, hold and low battery indicators
Range	Acceleration: 0.01 to 19.99 g (RMS) Velocity: 0.01 to 19.99 in/sec (RMS) Envelop: 0.01 to 19.99 ge (PEAK)
Frequency Range	Overall: 10 Hz to 10 kHz Envelop: 5 kHz to 10 kHz
Output	Audio (3.5 mm) mini plug, Sensor Power: 12 vdc @ 2mA
Power	(2) Alkaline "AA" cell batteries
Operating Time	20 hours continuous without phones
Weight	2.85 lb (1.30 kg) Complete Kit
Dimensions	6.3 x 3.3 x 1.25" (152 x 83 x 32 mm)
Operating Conditions	-14° to 122°F (-10° to 50°C)

Ordering Information		
Product	Item No.	Description
EXAMINER 1000 SYSTEM includes On-Time software	6400-010	Overall meter display unit with Sensor Pak, Headphones and On-Time software, field case and User Manual
EXAMINER 1000 without On-Time	6400-011	Same as above without software
EXAMINER 1000	6400-012	Overall Meter display without software, without Sensor Pak
Sensor Pak	6400-030	Accelerometer 100 mV/g integrated cable, magnetic base and 4.5" stinger probe.

Technical Data On-Time Software	
Operating System	Windows 95, 98 or NT
CPU	486 minimum. Pentium recommended
RAM	8 Megabytes minimum
Storage	100 Megabytes Hard Drive min
Graphics Card	VGA capable
Mouse	
Keyboard	
Media	Select 3.5" disks or CD ROM

Ordering Information		
Product	Item No.	Description

Distributed by:

**TRANSCAT**

[Visit us at Transcat.com!](http://www.transcat.com)

35 Vantage Point Drive // Rochester, NY 14624 // Call 1.800.800.5001

Specifications subject to change without notice. Windows is a trademark of Microsoft Corp.



**MONARCH MONITORING**

*Affordable Predictive Maintenance Solutions*