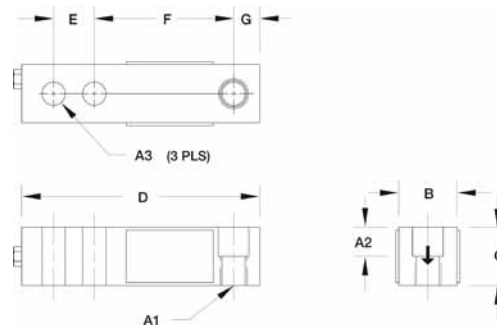


SQB Single-Ended Shear Beam, Alloy Steel NTEP 1:5000 Class III Multiple Cell, IP67



VPg - CELTRON



Picture is a representation of actual product



SPECIFICATIONS

<p>Full Scale Output: 3.0mV/V</p> <p>Output Resistance: 350 ohms +/- 3</p> <p>Input Resistance: 385 ohms +/- 5</p> <p>Material/Finish: High-alloy steel, nickel plated</p> <p>Temperature: Compensated range 14°F to 104°F/-10°C to 40°C</p>	<p>Safe Overload: 150% Full scale</p> <p>Safe Sideload: 100% Full scale</p> <p>Rated Excitation: 10V DC (15V maximum)</p> <p>Combined Error: 0.02% Full scale</p> <p>Insulation Resistance: 2000 megohms</p>	<p>Deflection at Capacity: 500-1000 lb=.013 in/.31 mm, 2000-3000 lb=.015 in/.4 mm, 4000-5000 lb=.025 in/.6 mm, 10,000 lb=.035 in/.9 mm</p> <p>Seal Type: Environmentally sealed, IP67</p> <p>Cable Length: 20 ft/6.1 m</p> <p>Cable Diameter: .200 polyurethane jacket</p>	<p>Cable Color Code: Red+ Excitation Black.....- Excitation Green+ Signal White- Signal</p> <p>Warranty: One-year limited warranty</p> <p>Approvals:  </p>
---	---	--	---

DIMENSIONS

RATED CAPACITY	A4	A2	A3	A1	B	C	D	E	F	G
lb/inches										
500	.53 DIA.	.50	.53	1/2-20 UNF-2B	1.25	1.00	5.12	1.00	3.00	.50
1000-5000SE	.53 DIA.	.62	.53	1/2-20 UNF-2B	1.25	1.25	5.12	1.00	3.00	.50
5000LE-10,000	.78 DIA.	.75	.78	3/4-16 UNF-2B	1.50	1.50	6.75	1.50	3.75	.75
15,000-20,000	1.03 DIA.	1.00	1.03	1-14 UNS	2.00	2.00	8.88	2.00	4.88	1.00
kg/mm										
226.8	13.5 DIA.	12.7	13.5	1/2-20 UNF-2B	31.8	25.4	130.0	25.4	76.2	12.7
453.6-2268.0SE	13.5 DIA.	15.8	13.5	1/2-20 UNF-2B	31.8	31.8	130.0	25.4	76.2	12.7
2268.0LE-4535.9	19.8 DIA.	19.1	19.8	3/4-16 UNF-2B	38.1	38.1	171.5	38.1	95.3	19.1
6803.9-9071.9	26.2 DIA.	25.4	26.2	1-14 UNS	50.8	50.8	225.6	50.8	124.0	25.4

ORDER INFORMATION

LOAD RATING		PART #	PRICE
NTEP 1:5000			
1000 lb	(453.6 kg)	30106	Consult
2000 lb	(907.2 kg)	30109	Consult
2500 lb	(1134.0 kg)	30112	Consult
3000 lb	(1360.8 kg)	30113	Consult
4000 lb	(1814.4 kg)	30270	Consult
5000 lb-SE	(2268.0 kg)	30114	Consult
5000 lb-LE	(2268.0 kg)	30115	Consult
10,000 lb	(4535.9 kg)	30117	Consult
Non-NTEP			
500 lb	(226.8 kg)	30101	Consult
15,000 lb	(6803.9 kg)	30118	Consult
20,000 lb	(9071.9 kg)	30121	Consult

SE refers to small envelope
LE refers to large envelope

INTERCHANGEABLE PRODUCTS

MANUFACTURER	MODEL	PAGE #
Rice Lake Weighing Systems	RL35023	125
Vishay Sensortronics	65023	312

WEIGH MODULE AVAILABLE

MANUFACTURER	MODEL	PAGE #
Rice Lake Weighing Systems	RL50210	136
Rice Lake Weighing Systems	RL1800 Series	56

TRANSCAT

▶ Visit us at Transcat.com!

35 Vantage Point Drive // Rochester, NY 14624 // Call 1.800.800.5001