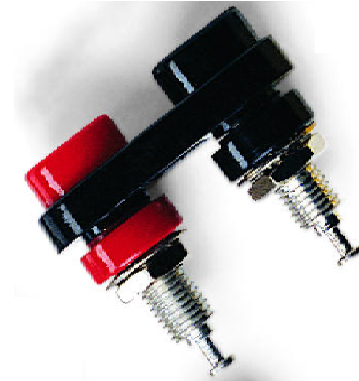
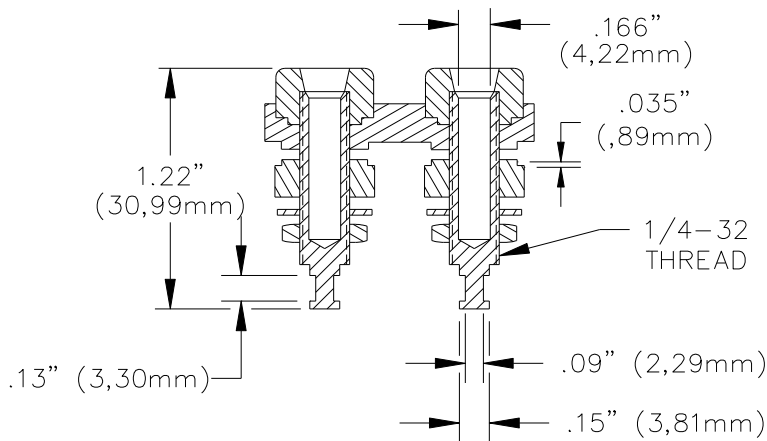
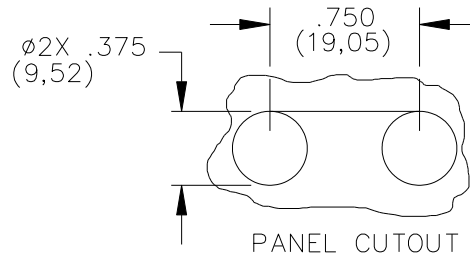
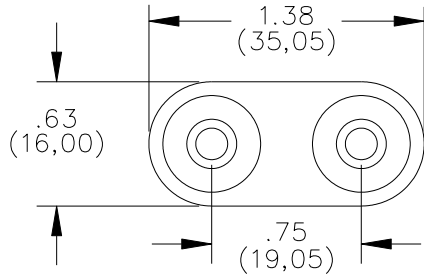


Model 2269 Insulated Double Banana Jack



FEATURES:

- ✓ Mounts in panels from .070" to .375" (1.60mm to 9.53mm).

MATERIALS:

Banana Jack: Bright Tin Plated Brass
 Mounting Base: Polycarbonate
 Insulator: Polycarbonate
 Lockwasher: Nickel Plated Steel
 Hex Nut: 3/8" 1/4-32 Nickel Plated Brass
 Solder Turret: Bright Tin Plated Brass

RATINGS:

Operating Voltage: Hands free usage in controlled voltage environments: 2500 Vrms maximum. *For CE compliance:* not intended for hand-held use at voltages above 33 Vrms/70 Vdc.

Operating Temperature: +239°F (+115°C) Max.

Current: 15 Amperes

ORDERING INFORMATION:

Model 2269-0 (Black Base)
 Model 2269-2 (Red Base)

All dimensions are in inches. Tolerances (except noted): .xx = $\pm .02$ " (.51 mm), .xxx = $\pm .005$ " (.127 mm).

All specifications are to the latest revisions. Specifications are subject to change without notice.

Registered trademarks are the property of their respective companies.